

# Request For Proposal

**Howard Family Trail Bridge  
Repair 2022**

---

*City of St. Joseph, Department of Public Works  
1160 Broad Street, St. Joseph, MI 49085*

## **I. Purpose**

This Request for Proposal (“RFP”) is to provide interested **contractors** with sufficient information to submit proposals for consideration by the City of St. Joseph (“City”) in connection with its needs for bridge repairs on the Howard Family Trail Bridge, located at the end of Lake Ct, St. Joseph. MI.

Favorable pricing will be one element of the selection process, but the experience of the firm, qualifications, experience and ability of assigned staff, completeness of the level of service proposed and timeliness of service proposed by the Bidder will be significant factors in award of this contract. Final decision on selection of the Bidder for this project will be determined by the City Commission. The City reserves the right to reject any proposals or parts of proposals. The City also reserves the right to waive any irregularities, inconsistencies, or take what other action is appropriate as determined by the City to be in the best interest of the City.

A complete Request for Proposal may be viewed or downloaded at [www.sjcity.com](http://www.sjcity.com), or mailed by contacting the City Clerk at 269-983-6325 or [clerk@sjcity.com](mailto:clerk@sjcity.com).

**REQUEST FOR PROPOSAL: Howard Family Trail Bridge Repair 2022**  
**CLOSING DATE AND TIME: 3:00 pm Tuesday, October 18, 2022**

## **II. Scope of Work & Bid Specifications:**

This project is Phase 3 of refurbishment of the Howard Family Trail Bridge. Phase 1 addressed the first two-hundred-fifty (250) feet of the upper bridge and was completed in Spring 2020. Phase 2 addressed the first three-hundred-fifty (350) feet of the lower bridge starting behind the St. Joseph Water Plant (1701 Lions Park Dr), and was completed in Spring of 2021. Phase 2 also addressed the sealing of the wood decking replaced during Phase 1.

Phase 3 will address the remaining three-hundred-fifty (350) feet between phases 1 and 2, which includes over the railroad. Additionally, this phase will include grading and erosion improvements at the upper bridge at Lake Ct, as well as the installation of a wood fence comparable to the existing fence. Phase 3 will also address the sealing of the wood decking replaced during Phase 2. Project is to be started after October 26, 2022 and completed before May 26, 2023. Once started, project must remain ongoing until completed.

- The first three-hundred-fifty (350) feet of decking on the lower bridge beginning behind the St. Joseph Water Plant shall be sealed with “Seal Once Marine Premium Wood Sealer.”
- All wood decking between Phase 1 and Phase 2 shall be replaced, and all steel members refurbished.
- Grading and erosion improvements to the upper bridge shall be installed per spec, and continuation of fence shall be constructed.

- Bid Specifications for bridge and steel work are described in Exhibit 1, attached and incorporated.
- Bid Specifications for grading and erosion work are described in Exhibit 2, attached and incorporated.
- Map of bridge location is described in Exhibit 3, attached and incorporated.

**INTERESTED PARTIES ARE ENCOURAGED TO VISIT THE SITE.**

Successful bidder must abide by all federal, state, and local laws, rules and regulations, specifically including but not limited to OSHA safety requirements and EPA regulations. IN addition, successful bidder must abide by industry best practice standards.

Minimum warranty requirements: One (1) year materials and labor.

**Issuing Officer (Point of Contact)**

Questions regarding the scope of work to be accomplished may be directed to one of the following:

- Jeff Rechner, Superintendent of Parks at (269) 408-4554; [jrechner@sjcity.com](mailto:jrechner@sjcity.com).
- Greg Grothous, Director of Public Works at (269) 985-0309; [ggrothous@sjcity.com](mailto:ggrothous@sjcity.com).

**Addenda**

In the event it becomes necessary to modify any part of this Request for Proposal, an addenda will be issued to all parties who received the original RFP.

**III. Instructions to Bidders**

Sealed bids are due at the at the St. Joseph City Clerk's Office no later than **3:00pm Tuesday, October 18, 2022**.

Proposals may be mailed or delivered to the City of St. Joseph City Clerk, 700 Broad Street, St. Joseph, Michigan 49085. Sealed envelopes should be plainly marked:

Attention: City Clerk  
Re: **Howard Family Trail Bridge Repair 2022**  
700 Broad Street  
St. Joseph, MI 49085

It is the sole responsibility of the Bidder to see that its proposal is received within the required time period. The City is not responsible for any errors or irregularities with the delivery method utilized for submittal of the Proposal. Any proposals received after the closing date and time will be returned unopened.

#### **IV. Incurring Costs**

The City is not liable for any costs related to respondents' preparation of their proposal.

#### **V. Withdrawal of Proposal**

Any Bidder may withdraw its proposal in person, by facsimile, or by letter, any time prior to the scheduled closing time for receipt of proposals. Each proposal shall be considered binding and in effect for a period of Sixty (60) days after the closing date.

#### **VI. Opening of Proposals**

Proposals will be opened publicly at **3:00 pm Tuesday, October 18, 2022** in the Commission Chambers on the 2<sup>nd</sup> floor of City Hall. Proposals will be evaluated as soon as practical after that date.

#### **VII. Evaluation of Proposals**

It is the intent of the City to evaluate all proposals quickly and be prepared to recommend an award at the October 24, 2022 City Commission meeting.

#### **VIII. Negotiations**

The City reserves the right to reject any and all proposals and negotiate with any source, in any manner necessary, deemed to be in its best interest.

#### **IX. Award of Contract / Acceptance of Proposal (Terms and Conditions)**

The contents of this RFP and the respondent's proposal, as submitted and/or modified, shall become contractual obligations to be executed by the authorized contracting agents of both parties.

The successful bidder must procure and maintain the following insurance with carriers acceptable to the City and admitted to do business in the State of Michigan, and provide proof of the same to the City:

- **Worker's Compensation Insurance**, including employers' Liability coverage, in accordance with Michigan law.
- **Commercial General Liability Insurance** on an "Occurrence Basis" with limits of liability not less than \$2,000,000 per occurrence and aggregate. Coverage shall include the following extensions: A). contractual liability, B) Broad form general liability extensions or equivalent.
- **Motor Vehicle Liability Insurance**, including Michigan No-Fault coverages, with limits not less than \$1,000,000 per occurrence combined single limit for bodily

injury and property damage. Coverage shall include all owned vehicles, non-owned vehicles, and hired vehicles.

The Commercial General Liability Insurances shall include an endorsement naming as an additional insured the City of St. Joseph, all elected and appointed officials, employees, volunteers, boards, commissions, and/or authorities and boards, including members, employees and volunteers thereof. Bidder's insurance shall be primary and any other insurance City may have in effect shall be considered secondary and/or excess. Coverage shall be maintained throughout the term of the agreement.

All insurance shall include an endorsement that contains a 30-day advance written notice of cancellation to the City Manager, City of St. Joseph, Michigan, 700 Broad Street, St. Joseph, Michigan 49085.

**X. Nondiscrimination**

The successful bidder shall not discriminate in its provision of accommodations or services, nor against an employee or applicant for employment with respect to hire, tenure, terms, conditions, or privileges of employment, or a matter directly or indirectly related to employment, because of race, color, religion, national origin, age, sex, sexual orientation, gender identity, height, weight, marital status, or because of a disability that is unrelated to the individual's ability to perform the duties of a particular job or position. Breach of this covenant may be regarded as a material breach of the agreement.

**XI. Payment Terms:**

The City shall make payments to the successful bidder for actual services rendered within thirty (30) days following receipt of an acceptable invoice; or as otherwise mutually agreed.

**PROJECT SPECIFICATION**  
**FOR**  
**CLEANING, NO COAT**  
**OF EXISTING STRUCTURAL STEEL**

**General**

This work consists of shop cleaning of existing structural weathering steel members and allowing the patina process to start again. This item includes all work for the removal, replacement, if necessary, and reinstallation of each of the steel sections.

Refer to Society for Protective Coatings (SSPC) Steel Structures Painting Manual, Volume 1 and Volume 2 for definitions of cleaning criteria and other coating terms.

**Submittals**

The CONTRACTOR shall submit a construction schedule including closure times for removal and replacement.

**Quality Assurance**

Work to be performed by a fabricator with AISC Sophisticated Paint Endorsement or certification through the Society of Protective Coasting SSPC QP3 Shop Painting Certification Program.

**Delivers, Storage, And Handling**

Remove and protect beams during storage and transport against additional damage or deterioration.

Following cleaning, store steel in such a way that all sides, top, and bottom are exposed to the same humidity levels. Keep steel members off the ground and spaced by using pallets, dunnage, or other supports and spacers.

Do not store materials in a manner that might cause distortion, damage, or overload to members or supporting structures. Repair or replace damaged materials or structures as directed.

**Products**

Existing steel members are C12x20.7 (C300x30.8 metric) weathering steel. Steel section loss cannot exceed 3/8" and no holes within flange will be accepted. If section is unacceptable, replace with new weathering steel beam.

All fasteners – bolts, washers, and nuts to be replaced and included in this item. Sizing to match according to the original construction plans.

**Cleaning**

Before cleaning, remove oil or grease deposits in accordance with SSPC-SP 1, Solvent Cleaning.

Clean the steel by abrasive blast cleaning for removal of all visible mill scale & rust approximating SSPC-SP10, Near White Blast Cleaning. Use a low dusting abrasive, steel grit or shot, or a combination of these for blast cleaning. Provide abrasives with a gradation capable of producing a uniform profile of 1 mil to 2.8 mils using extra coarse replica tape.

PROJECT SPECIFICATIONS

FOR

BRIDGE WORK

Description

The Howard Family Pedestrian bridge is framed with weathering steel beams. Over time, some of the beams have deteriorated beyond what is expected for weathering steel. To prevent this condition from worsening, sections of the beams and joists will be removed and refinished on a schedule.

This work shall consist of all labor, material, and equipment necessary to remove, refinish, and replace the existing beams and joists to match existing drawings. This item also includes all soil erosion and sedimentation control; traffic control; managing utilities; all shoring and support; railroad permits, restoration; and any work required to fully restore the area. The work under this item shall be performed in accordance with the 2012 MDOT Standard Specifications for Construction.

Demolition

Decking to be removed and properly disposed of to allow adequate access for performing the work. All cuts shall be clean, square and true, and shall be replaced with materials equal to those removed, or as approved by the ENGINEER.

Utilities

CONTRACTOR shall contact "Miss Dig" @811 for protection of underground utilities a minimum of three (3) full working days, excluding Saturdays, Sundays, and holidays, prior to beginning excavations.

The CONTRACTOR shall be responsible for the repair of any damage to any utility due to his operations. All utilities requiring excavation shall be backfilled and compacted to 95% modified proctor density.

Construction Methods

The CONTRACTOR shall perform all the work required to replace the specified beam sections and restore the surrounding areas.

Soil Erosion and Sedimentation Control

Prior to performing any ground disturbance work the CONTRACTOR shall place and maintain soil erosion control measures which shall remain in place until the work is complete and permanent measures are in place. Fabric silt fence shall also be placed along the edge of the embankment to catch sediment from runoff.

General Cleanup Provisions

All work shall be performed by laborers skilled in the particular type of work, in an orderly, neat and quiet manner so as to cause the least amount of inconvenience, noise, dust, and other objectionable features. All construction materials, debris, rubbish, and waste generated as a result of the work shall become the CONTRACTOR'S property to be promptly removed from the site and disposed of properly.

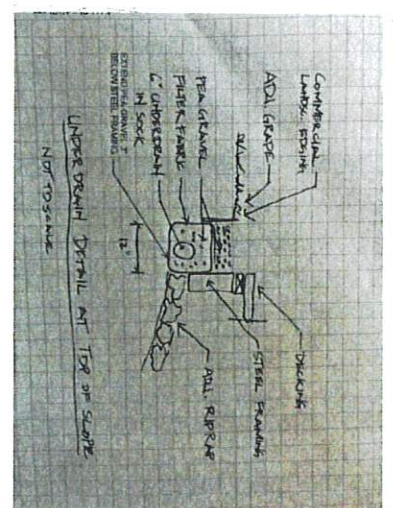
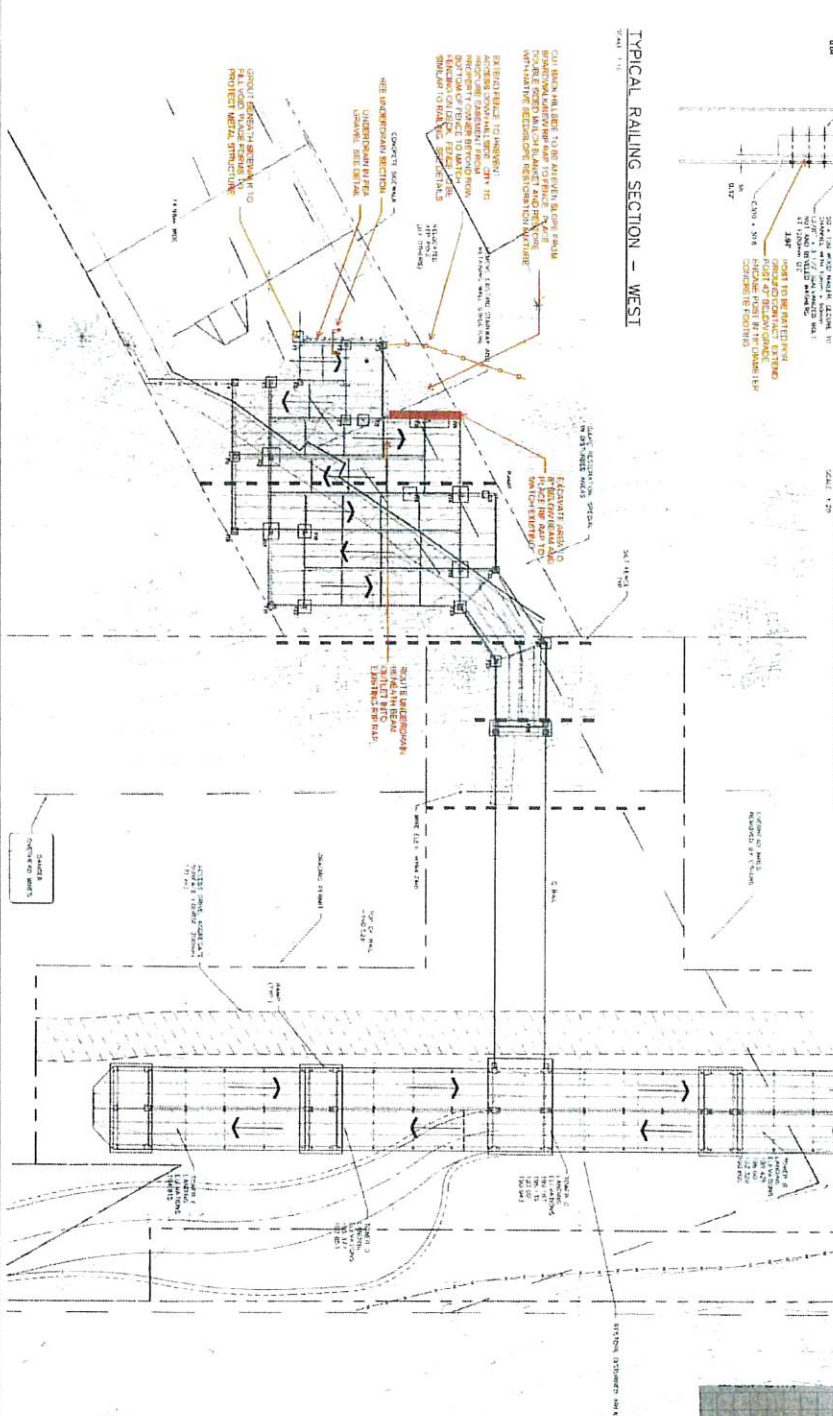
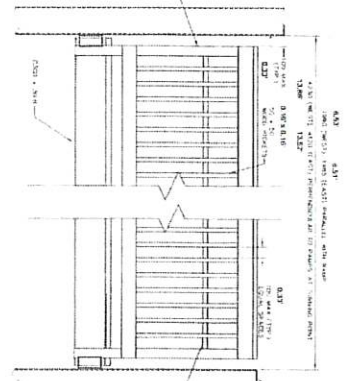
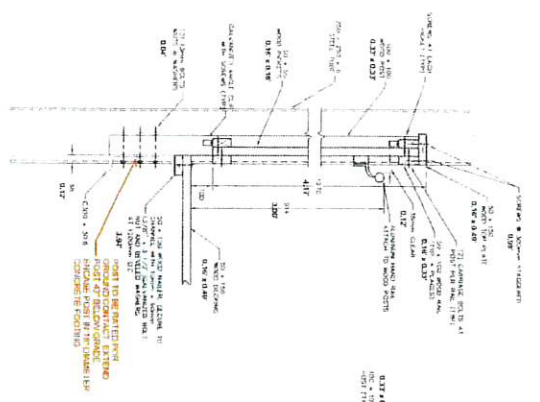
Pay Item

Bridge Work

Pay Unit

LSum





ITEM NO.	DESCRIPTION	QUANTITY	UNIT
1	CONCRETE BRIDGE PILES	1	EA
2	STEEL BRIDGE PILES	1	EA
3	BRIDGE DECK	1	EA
4	BRIDGE GIRDERS	1	EA
5	BRIDGE TRUSSES	1	EA
6	BRIDGE BEAMS	1	EA
7	BRIDGE JOISTS	1	EA
8	BRIDGE FLOORING	1	EA
9	BRIDGE CURBS	1	EA
10	BRIDGE LIGHTS	1	EA
11	BRIDGE SIGNAGE	1	EA
12	BRIDGE UTILITIES	1	EA
13	BRIDGE MAINTENANCE	1	EA
14	BRIDGE REPAIR	1	EA
15	BRIDGE REPLACEMENT	1	EA
16	BRIDGE DEMOLITION	1	EA
17	BRIDGE CONSTRUCTION	1	EA
18	BRIDGE OPERATION	1	EA
19	BRIDGE MAINTENANCE	1	EA
20	BRIDGE REPAIR	1	EA
21	BRIDGE REPLACEMENT	1	EA
22	BRIDGE DEMOLITION	1	EA
23	BRIDGE CONSTRUCTION	1	EA
24	BRIDGE OPERATION	1	EA
25	BRIDGE MAINTENANCE	1	EA
26	BRIDGE REPAIR	1	EA
27	BRIDGE REPLACEMENT	1	EA
28	BRIDGE DEMOLITION	1	EA
29	BRIDGE CONSTRUCTION	1	EA
30	BRIDGE OPERATION	1	EA
31	BRIDGE MAINTENANCE	1	EA
32	BRIDGE REPAIR	1	EA
33	BRIDGE REPLACEMENT	1	EA
34	BRIDGE DEMOLITION	1	EA
35	BRIDGE CONSTRUCTION	1	EA
36	BRIDGE OPERATION	1	EA
37	BRIDGE MAINTENANCE	1	EA
38	BRIDGE REPAIR	1	EA
39	BRIDGE REPLACEMENT	1	EA
40	BRIDGE DEMOLITION	1	EA
41	BRIDGE CONSTRUCTION	1	EA
42	BRIDGE OPERATION	1	EA
43	BRIDGE MAINTENANCE	1	EA
44	BRIDGE REPAIR	1	EA
45	BRIDGE REPLACEMENT	1	EA
46	BRIDGE DEMOLITION	1	EA
47	BRIDGE CONSTRUCTION	1	EA
48	BRIDGE OPERATION	1	EA
49	BRIDGE MAINTENANCE	1	EA
50	BRIDGE REPAIR	1	EA
51	BRIDGE REPLACEMENT	1	EA
52	BRIDGE DEMOLITION	1	EA
53	BRIDGE CONSTRUCTION	1	EA
54	BRIDGE OPERATION	1	EA
55	BRIDGE MAINTENANCE	1	EA
56	BRIDGE REPAIR	1	EA
57	BRIDGE REPLACEMENT	1	EA
58	BRIDGE DEMOLITION	1	EA
59	BRIDGE CONSTRUCTION	1	EA
60	BRIDGE OPERATION	1	EA
61	BRIDGE MAINTENANCE	1	EA
62	BRIDGE REPAIR	1	EA
63	BRIDGE REPLACEMENT	1	EA
64	BRIDGE DEMOLITION	1	EA
65	BRIDGE CONSTRUCTION	1	EA
66	BRIDGE OPERATION	1	EA
67	BRIDGE MAINTENANCE	1	EA
68	BRIDGE REPAIR	1	EA
69	BRIDGE REPLACEMENT	1	EA
70	BRIDGE DEMOLITION	1	EA
71	BRIDGE CONSTRUCTION	1	EA
72	BRIDGE OPERATION	1	EA
73	BRIDGE MAINTENANCE	1	EA
74	BRIDGE REPAIR	1	EA
75	BRIDGE REPLACEMENT	1	EA
76	BRIDGE DEMOLITION	1	EA
77	BRIDGE CONSTRUCTION	1	EA
78	BRIDGE OPERATION	1	EA
79	BRIDGE MAINTENANCE	1	EA
80	BRIDGE REPAIR	1	EA
81	BRIDGE REPLACEMENT	1	EA
82	BRIDGE DEMOLITION	1	EA
83	BRIDGE CONSTRUCTION	1	EA
84	BRIDGE OPERATION	1	EA
85	BRIDGE MAINTENANCE	1	EA
86	BRIDGE REPAIR	1	EA
87	BRIDGE REPLACEMENT	1	EA
88	BRIDGE DEMOLITION	1	EA
89	BRIDGE CONSTRUCTION	1	EA
90	BRIDGE OPERATION	1	EA
91	BRIDGE MAINTENANCE	1	EA
92	BRIDGE REPAIR	1	EA
93	BRIDGE REPLACEMENT	1	EA
94	BRIDGE DEMOLITION	1	EA
95	BRIDGE CONSTRUCTION	1	EA
96	BRIDGE OPERATION	1	EA
97	BRIDGE MAINTENANCE	1	EA
98	BRIDGE REPAIR	1	EA
99	BRIDGE REPLACEMENT	1	EA
100	BRIDGE DEMOLITION	1	EA

**HOWARD PEDESTRIAN BRIDGE - REHABILITATION PROJECT**  
**W. WIGHTMAN**  
 WVA PROJECT NO. 20080 SHEET 10F  
 REVISIONS

**HOWARD FAMILY NON-MOTORIZED PATH**  
 PHASE IV  
 CITY OF ST. JOSEPH  
 BERRIEN COUNTY, MICHIGAN  
**ABONNARCHE CONSULTANTS, INC.**  
 1000 N. HARRIS AVENUE  
 BERRIEN COUNTY, MICHIGAN 49307  
 PHONE: 616.895.1111  
 FAX: 616.895.1112  
 WWW.ABONNARCHE.COM

**PEDESTRIAN BRIDGE**  
**GENERAL PLAN OF SITE**  
**AS-BUILTS**

DATE: 10/11/11	SCALE: 1/8" = 1'-0"
DRAWN BY: [Name]	CHECKED BY: [Name]
DATE: 10/11/11	SCALE: 1/8" = 1'-0"
DRAWN BY: [Name]	CHECKED BY: [Name]

3







**City of St. Joseph**

**Howard Family Trail Bridge Repair 2022**

**Bid Form**

Bid for bridge repair per City of St. Joseph specifications is as follows:

<b>Pay Item</b>	<b>Pay Unit</b>
1. Bridge Work	Lump Sum: _____
2. Cleaning, No Coat	Each: _____
3. C12x20.7 Weathering Steel Beam	Ft: _____
4. Pressure Treated Lumber	Each: _____
5. Grading/Erosion Control Work	Lump Sum: _____