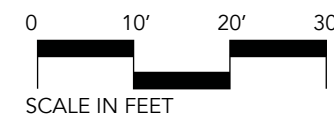




- A** Paved parking lot with up to 2 van-accessible spaces and 2 barrier-free spaces, with a 14-foot turnaround with boulder retaining wall. Drive lane aggregate.
- B** Concrete sidewalk
- C** Location for kayak/canoe vendor kiosk
- D** Accessible kayak/canoe launch
- E** Picnic area with chips & fines surface flush with old water tower foundation.
- F** Surface mounted shade sail, fixed tables, and drinking fountain
- G** Port-o-let with wood screen and concrete foundation.
- H** Boardwalk overlook with benches and interpretive sign.
- I** Park sign (existing)
- J** "Cowl" sculpture and landscape bed
- K** Bat house

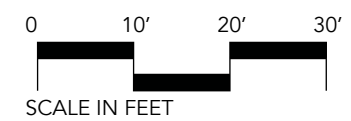
PADDLER PARK PRELIMINARY CONCEPT A





- A** Paved parking lot with up to 2 van-accessible spaces and 2 barrier-free spaces, with a 14-foot turnaround with boulder retaining wall. Drive lane aggregate.
- B** Concrete sidewalk
- C** Location for kayak/canoe vendor kiosk
- D** Accessible kayak/canoe launch
- E** Picnic area with chips & fines surface flush with old water tower foundation.
- F** Fixed tables with umbrellas and drinking fountain
- G** Port-o-let with wood screen and concrete foundation.
- H** Boardwalk overlook with benches and interpretive sign.
- I** Park sign (existing)
- J** "Cowl" sculpture and landscape bed
- K** Bat house

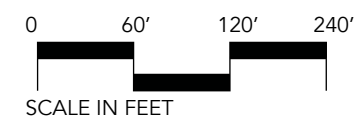
PADDLER PARK PRELIMINARY CONCEPT B





- A** Seasonal accessible mat to the beach.
- B** Refresh of restroom; addition of railing on rooftop to match existing railing.
- C** Defined nature path highlighting ecosystem components such as native plants, butterflies, and migratory birds. Proposed path follows primary existing path, with ~4' width cleared trail with occasional logs and boulders for resting.
- D** Learning pockets with native plants, interpretive sign, and cluster of logs and/or boulders for informal play and climbing.
- E** Local hardwood boundary posts, approx. 2' ht at 20' intervals to subtly demarcate park property bounds without disturbing habitat or becoming an aesthetic distraction.
- F** Two additional picnic areas with (2) picnic tables and (1) grill.
- G** Regrade swale to improve parking lot drainage.
- H** Enlargement 1A: Picnic Pavilion
- I** Enlargement 2A: Maintenance area and potential parking
- J** River Overlook. Remove existing pavilion and portions of concrete pad, install benches, interpretive sign, and bat house.
- K** Food truck location A: 20'x20' pad for food trucks, with electrical pedestal.

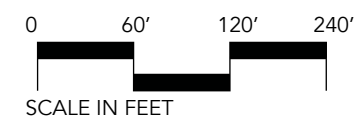
TISCORNIA PARK PRELIMINARY CONCEPT A

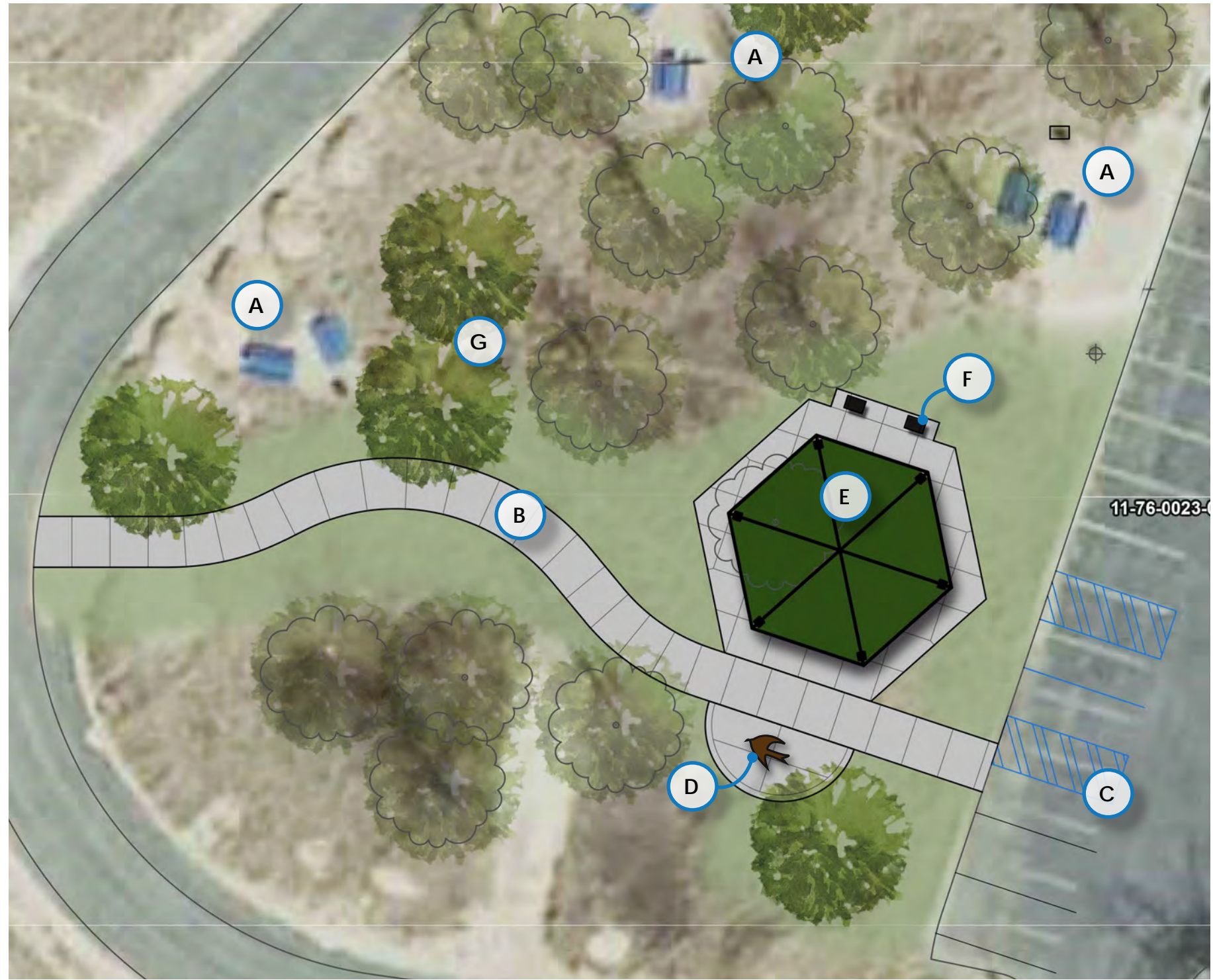




- A** Seasonal accessible mat to the beach.
- B** Refresh of restroom; addition of railing on rooftop to match existing railing.
- C** Defined nature path highlighting ecosystem components such as native plants, butterflies, and migratory birds. Proposed path follows primary existing path, with ~4' width cleared trail with occasional logs and boulders for resting.
- D** Learning pockets with native plants, interpretive sign, and cluster of logs and/or boulders for informal play and climbing.
- E** Local hardwood boundary posts, approx. 2' ht at 20' intervals to subtly demarcate park property bounds without disturbing habitat or becoming an aesthetic distraction.
- F** Two additional picnic areas with (2) picnic tables and (1) grill.
- G** Regrade swale to improve parking lot drainage.
- H** Enlargement 1B: Picnic Pavilion
- I** Enlargement 2B: Maintenance area, food truck location B, and potential parking.
- J** River Overlook. Remove existing pavilion and portions of concrete pad, install benches, interpretive sign, and bat house.

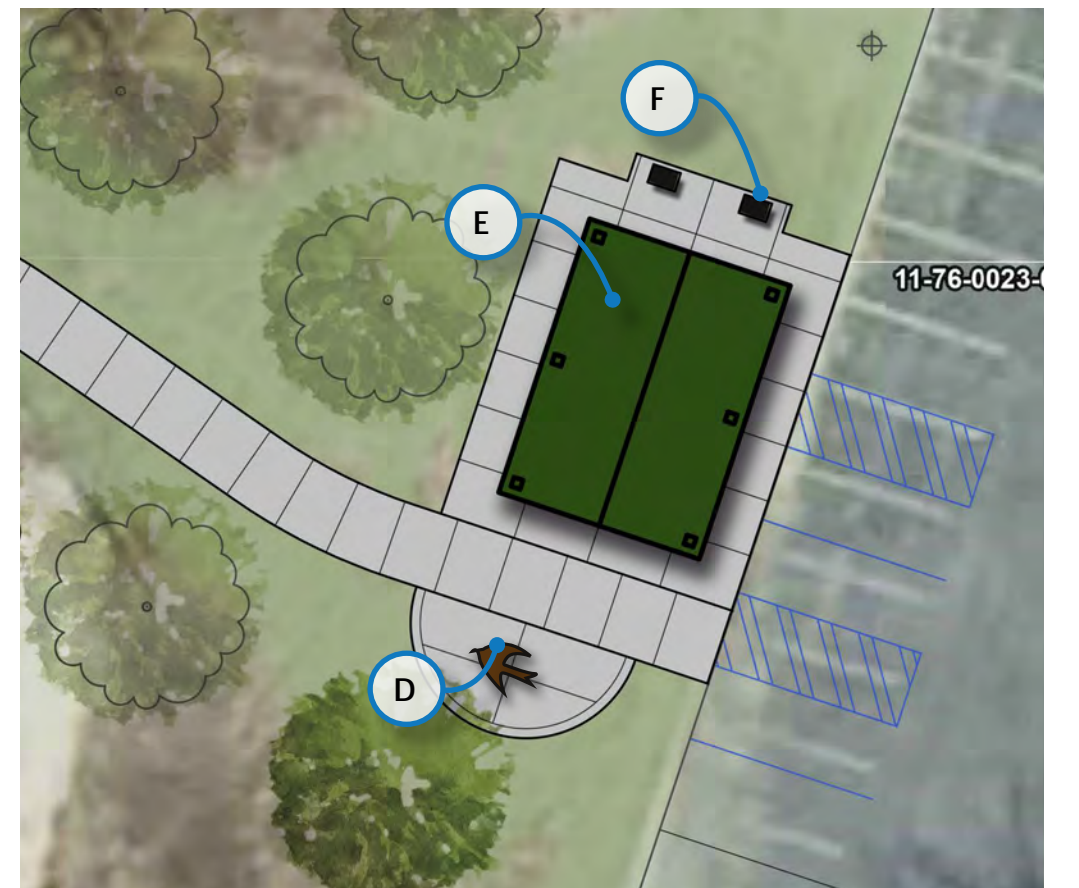
TISCORNIA PARK PRELIMINARY CONCEPT B





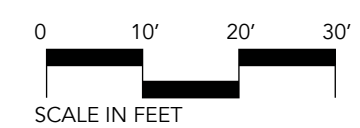
ENLARGEMENT 1A: PAVILION
 Apart from parking lot, hexagonal, requires (1) tree removal, provides space between parking and picnic.

- A** Picnic area with (2) picnic tables and (1) grill, all existing.
- B** Concrete sidewalk, 8' width.
- C** Re-stripe parking lot to include barrier-free van-accessible spaces near pavilion and accessible route to beach.
- D** Ecological or animal-themed sculpture (suitable for climbing).
- E** Pavilion for 40-50 people, with picnic tables.
- F** (2) charcoal grills adjacent to pavilion.
- G** New trees



ENLARGEMENT 1B: PAVILION
 Adjacent to parking lot, requires no tree removals.

TISCORNIA PARK ENLARGEMENT 1: PAVILION





ENLARGEMENT 2A

- A** Location for additional (22) parking spaces.
- B** Potential future parking bay.
- C** Map of park at trail entry; defined nature path highlighting ecosystem components such as native plants, butterflies, and migratory birds. Proposed path follows primary existing path, with ~4' width cleared trail with occasional logs and boulders for resting. 30' of trail barrier-free to first learning pocket.
- D** Maintenance Option A: 12'x16' maintenance shed with green roof. Requires removal of +/- 1 tree and little earthwork.
- E** Dumpster Option A: 14'x7' dumpster with wood enclosure. Proposed evergreen screening and new trees
- F** 20'x20' designated vendor/food truck location with electrical connection.
- G** Location for winter port-o-let.
- H** Stripe pedestrian walkway through center of parking lot.



ENLARGEMENT 2B

- A** Additional (20) parking spaces.
- B** Food Truck Option B: 20'x20' designated striped area with electrical pedestal.
- C** Map of park at trail entry; defined nature path highlighting ecosystem components such as native plants, butterflies, and migratory birds. Proposed path follows primary existing path, with ~4' width cleared trail with occasional logs and boulders for resting. 30' of trail barrier-free to first learning pocket.
- D** Maintenance Option B: 12'x16' maintenance shed with green roof. Requires removal of +/- 1 tree and little earthwork.
- E** Dumpster Option B: 14'x7' dumpster with wood enclosure. Proposed evergreen screening and new trees.
- F** Location for winter port-o-let.

