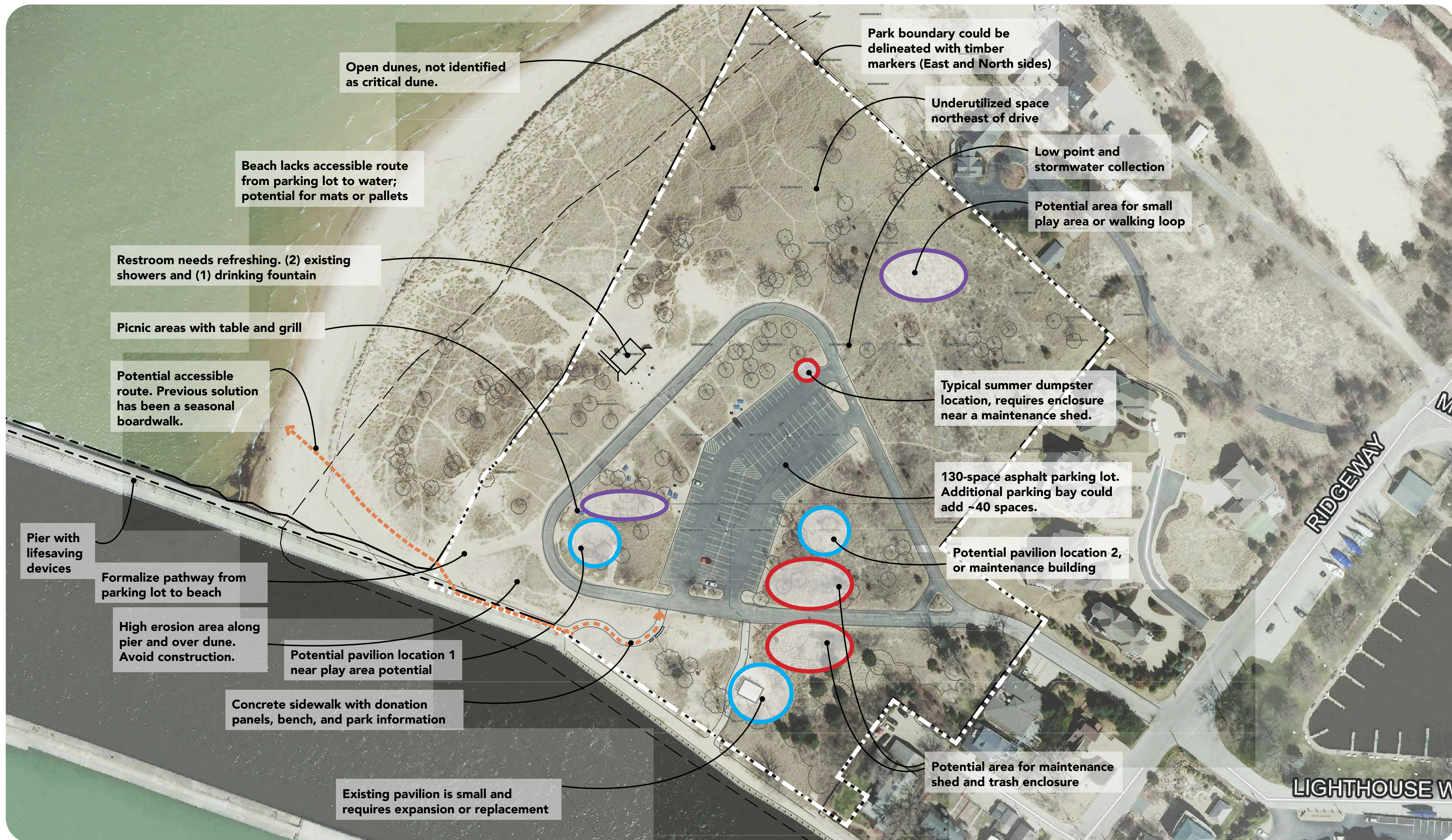


WHAT IS HERE NOW..

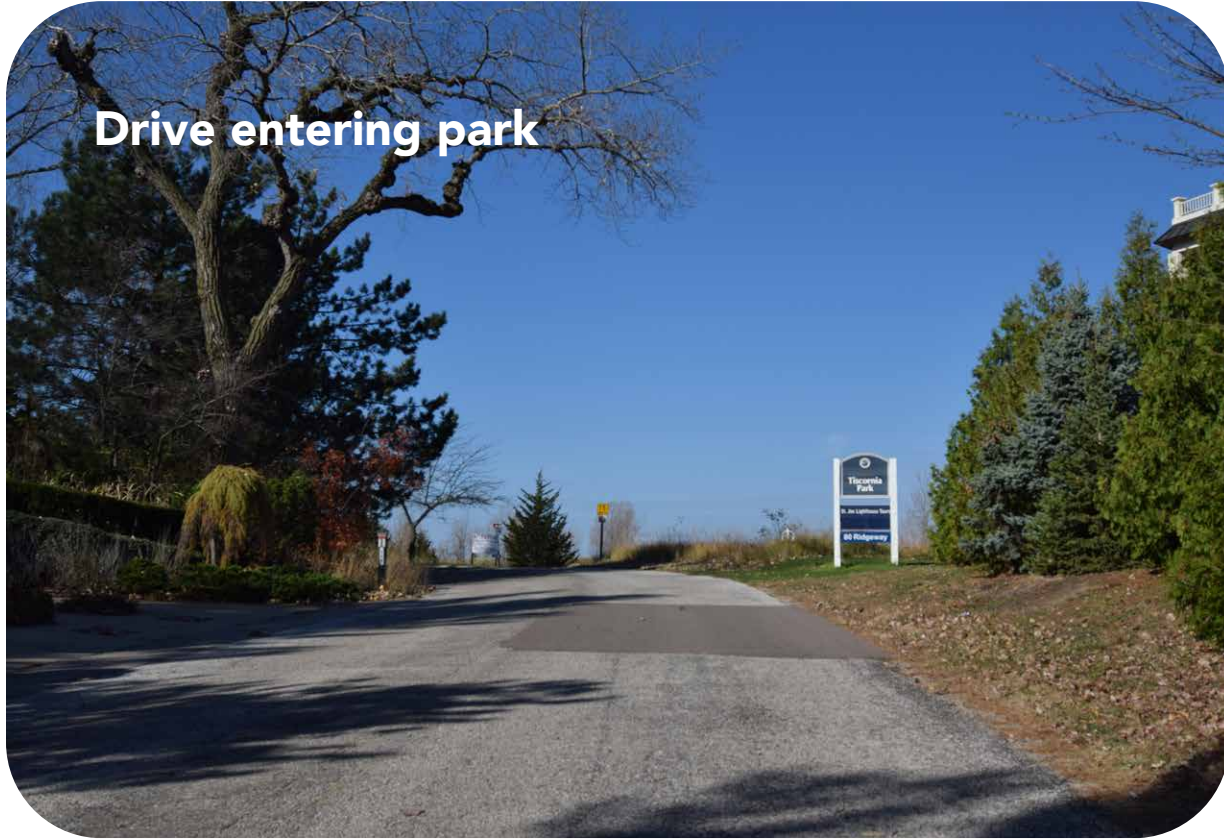
TISCORNIA PARK



Tiscornia Park's 16 acres include a 130-space asphalt parking lot, restroom building, picnic and grill areas, a small shelter, access to the pier, and a wide beach area with swimming access.

WHAT IS HERE NOW...

TISCORNIA PARK



Drive entering park



Northwest drive loop towards Lake Michigan



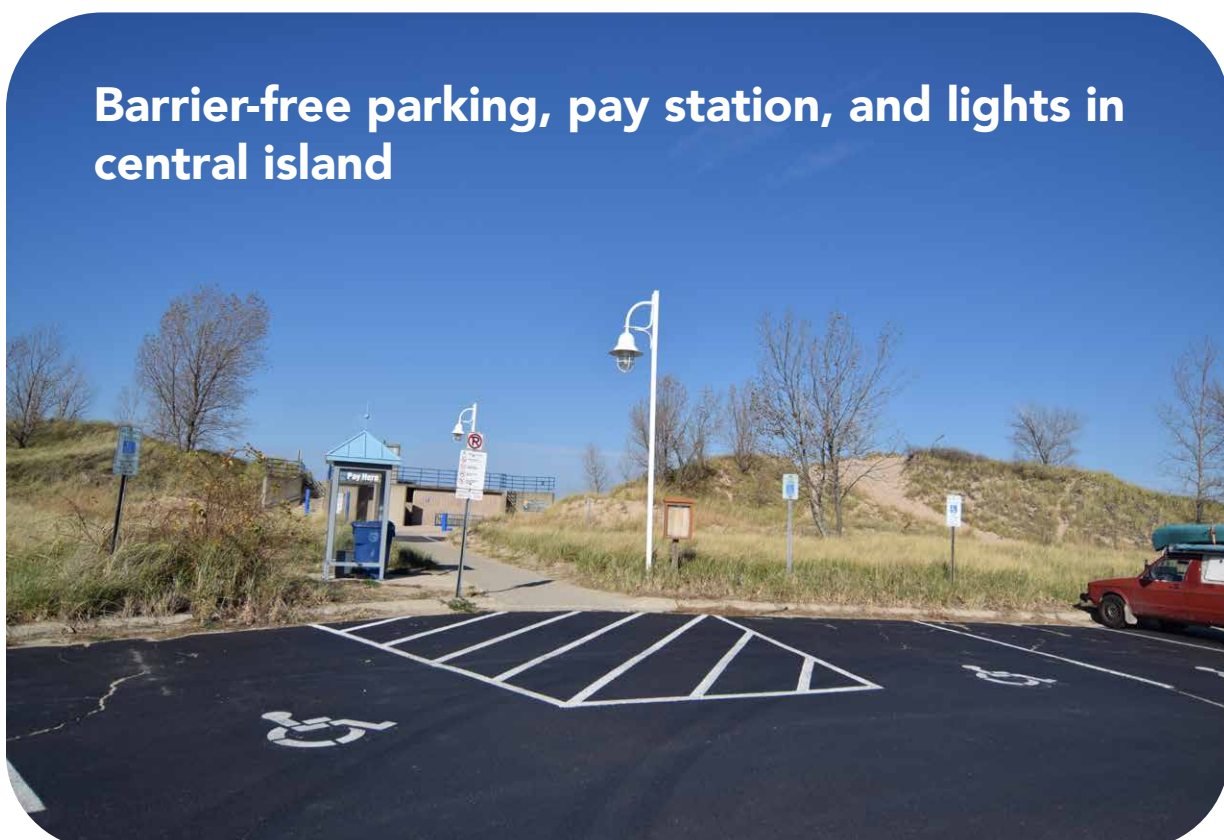
Restroom building, showers/foot washes, drinking fountain. Needs refreshing



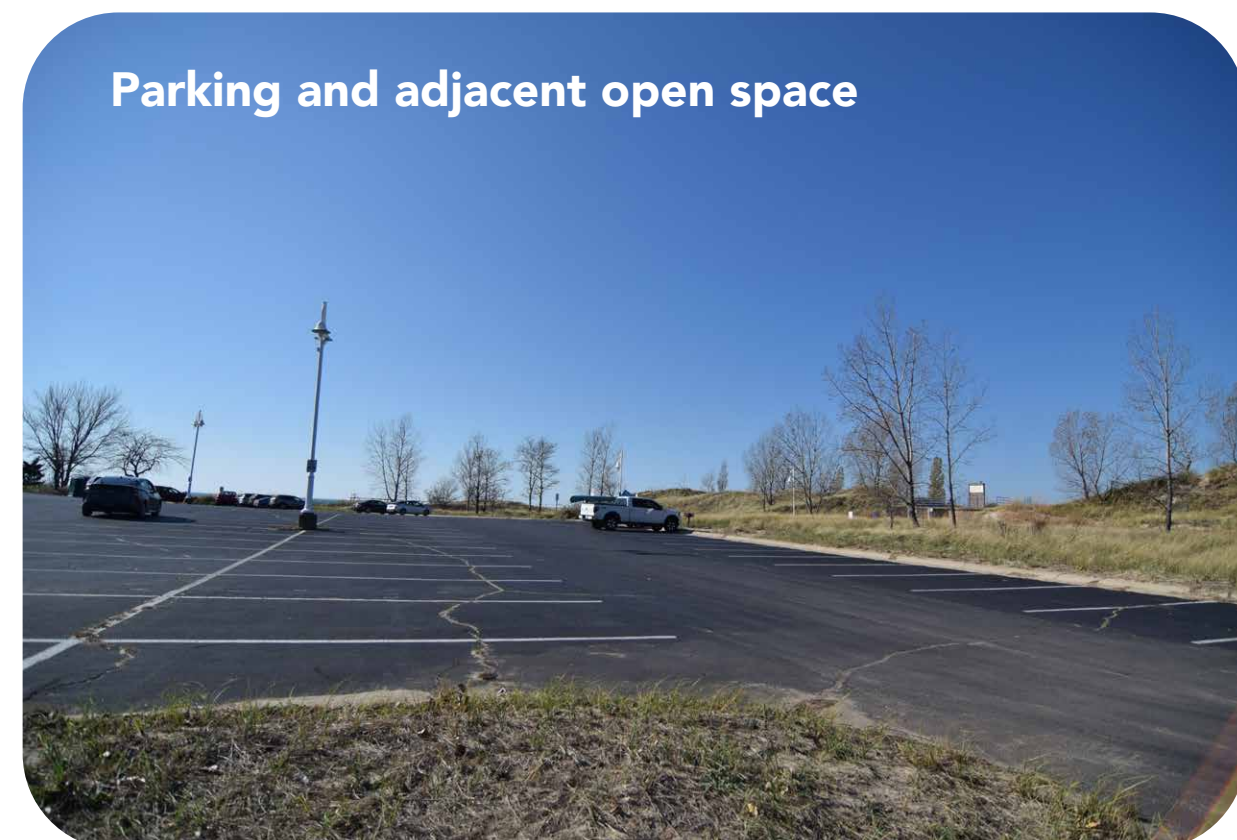
Looking southeast from restroom building over parking lot



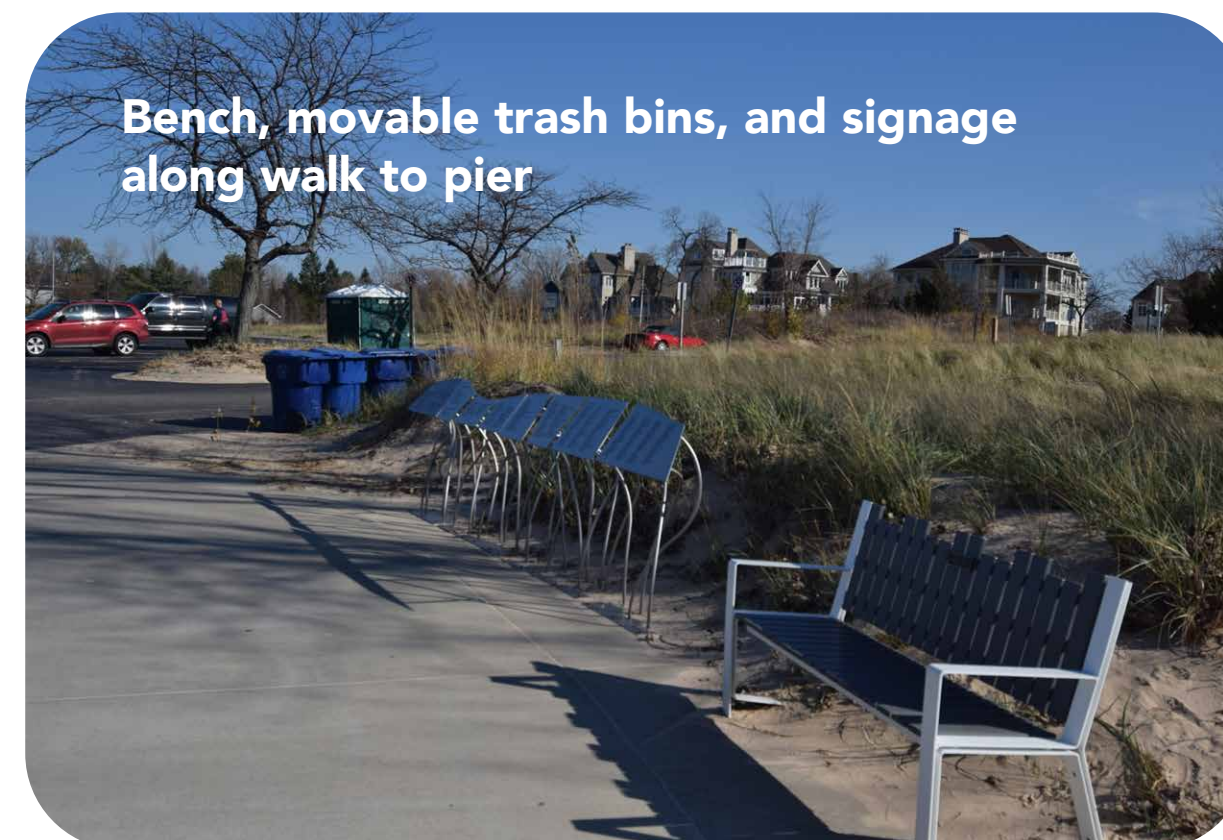
Looking southeast along pier toward walkway and potential pavilion location 1. Potential location for accessible beach walk.



Barrier-free parking, pay station, and lights in central island



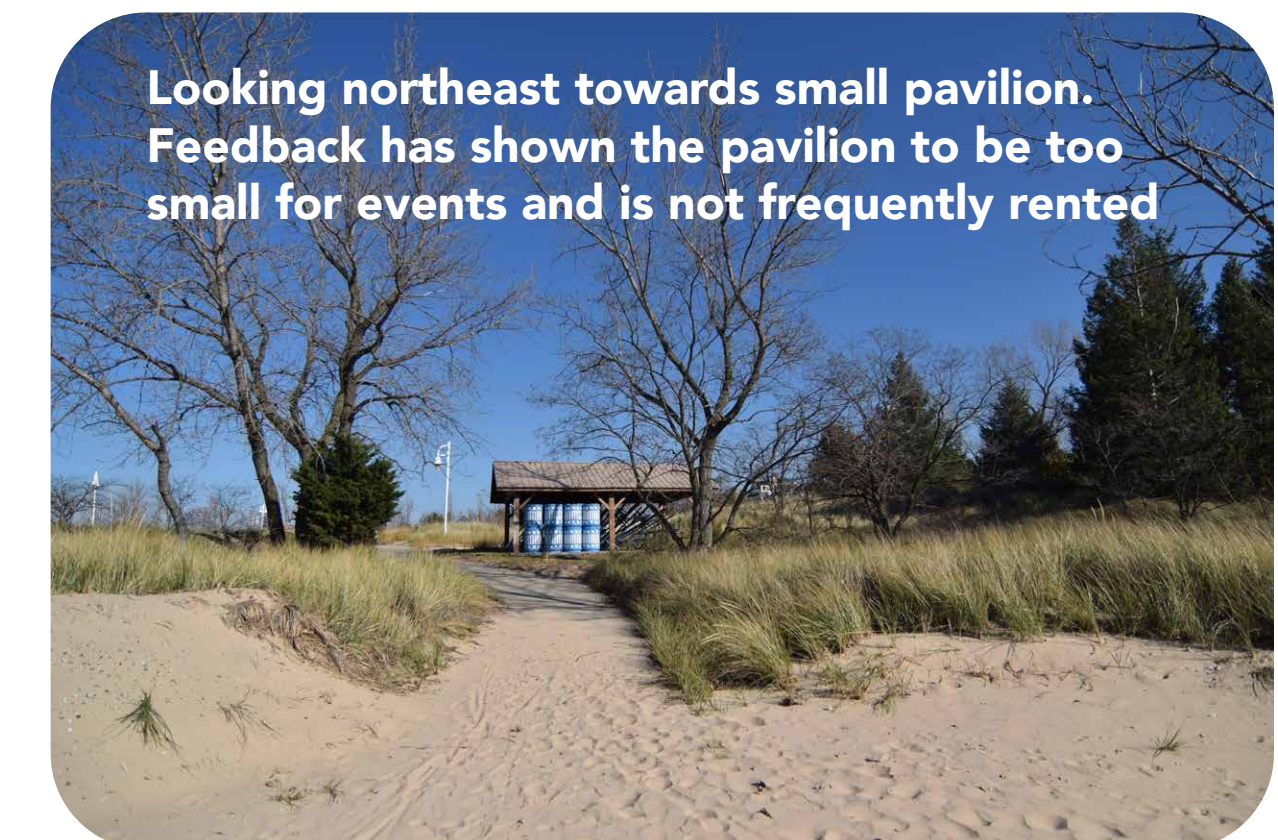
Parking and adjacent open space



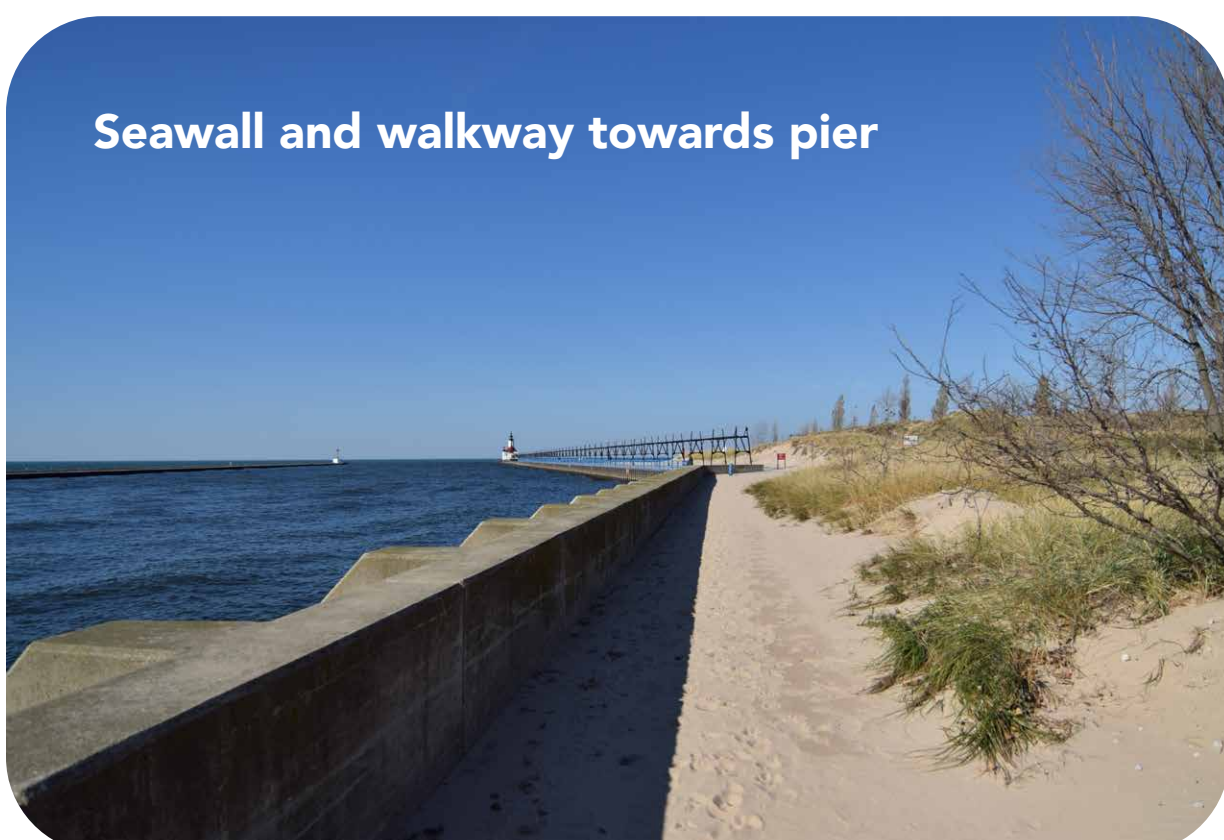
Bench, movable trash bins, and signage along walk to pier



Existing pavilion is too small for regular rentals and needs replacement



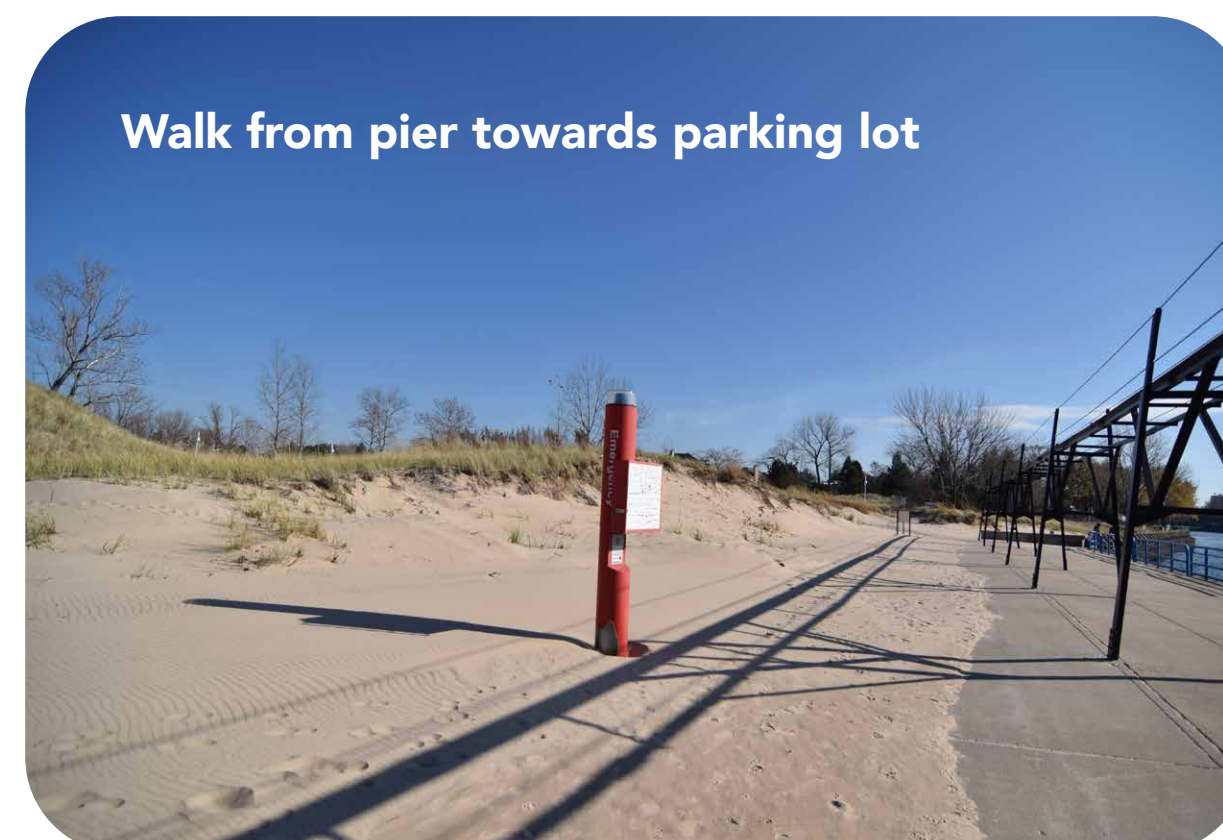
Looking northeast towards small pavilion. Feedback has shown the pavilion to be too small for events and is not frequently rented



Seawall and walkway towards pier



Pier and existing walk that requires regular sand clearing



Walk from pier towards parking lot



Looking north to pavilion area, maintenance area, or expanded parking area

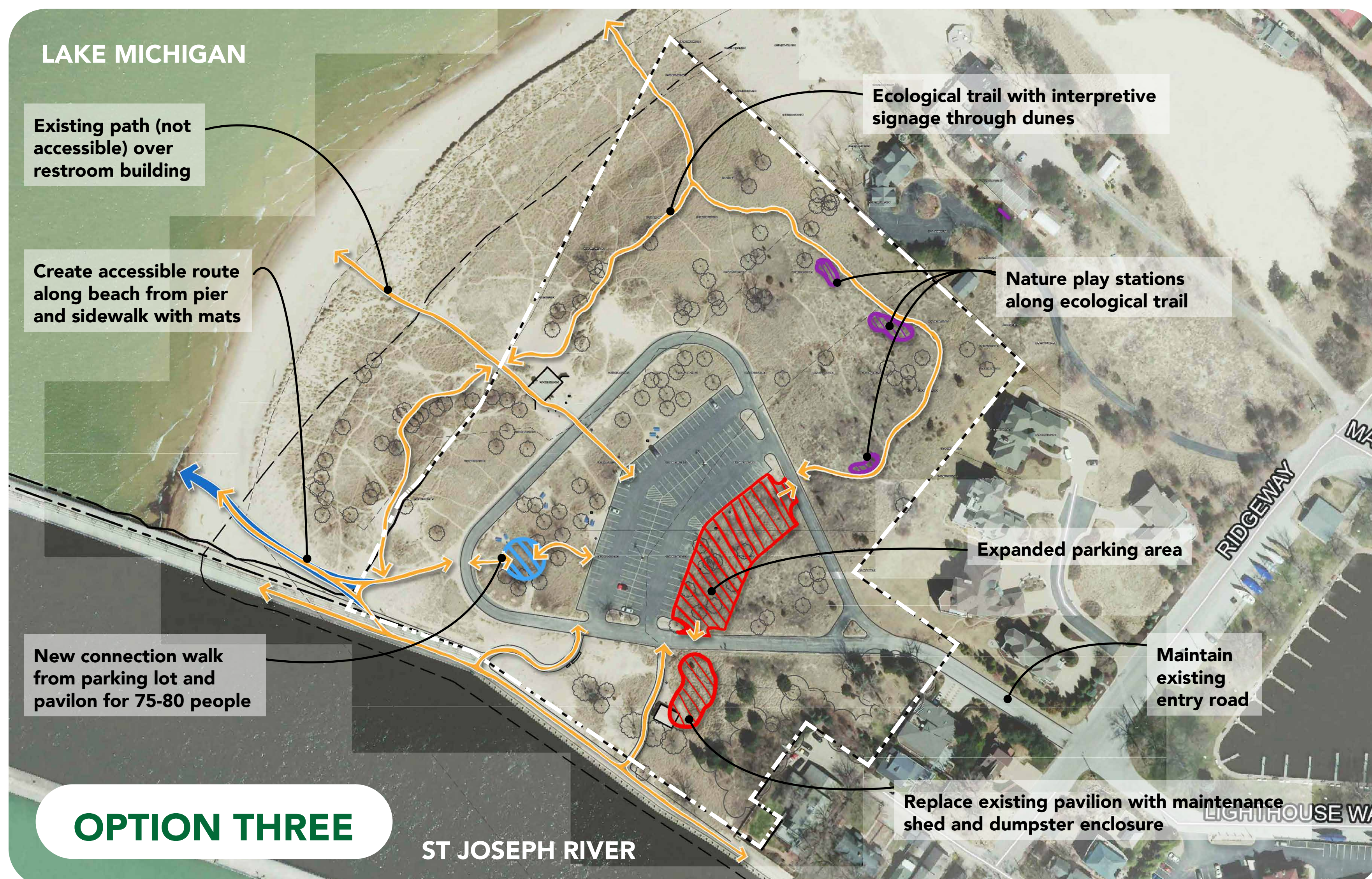
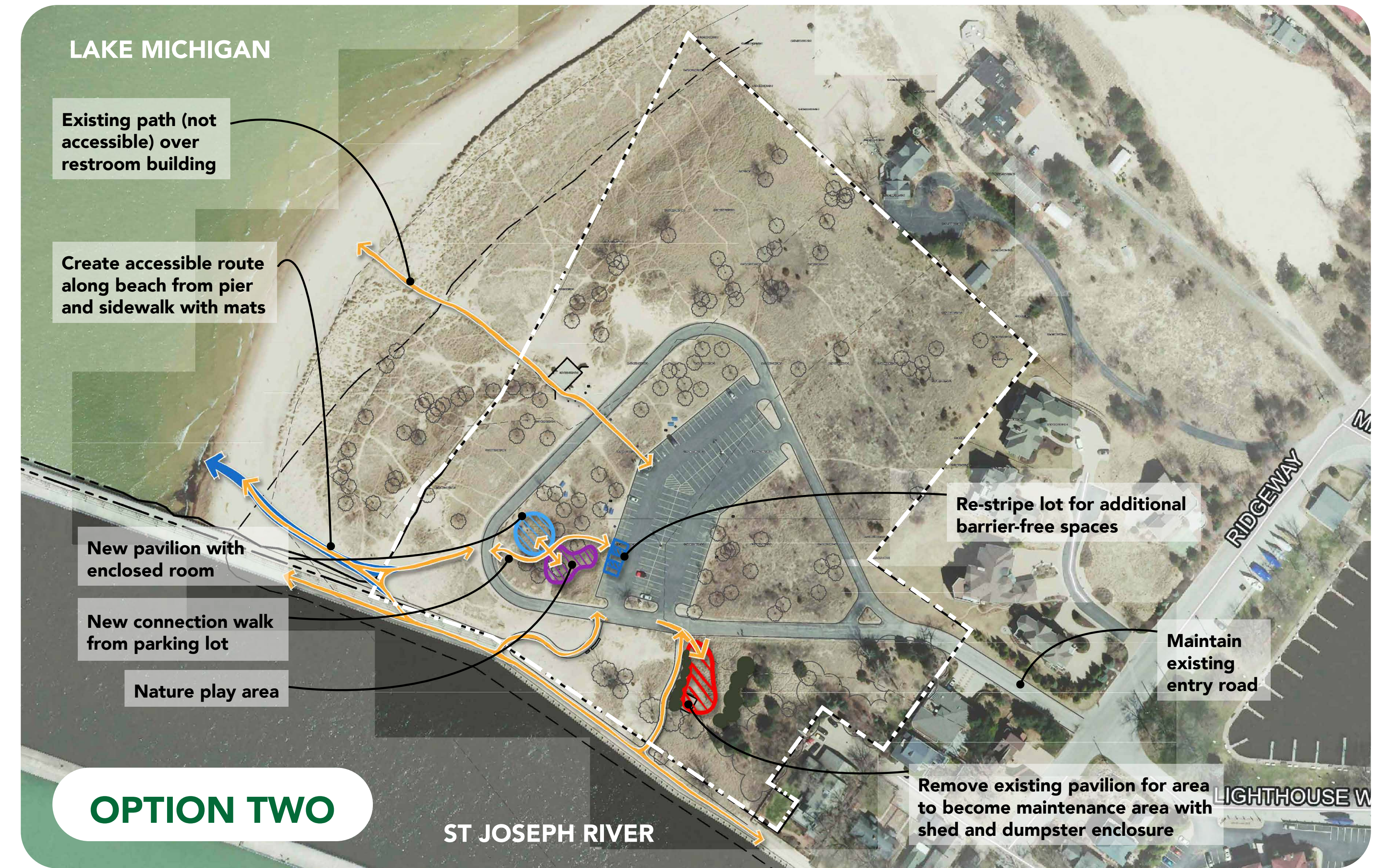
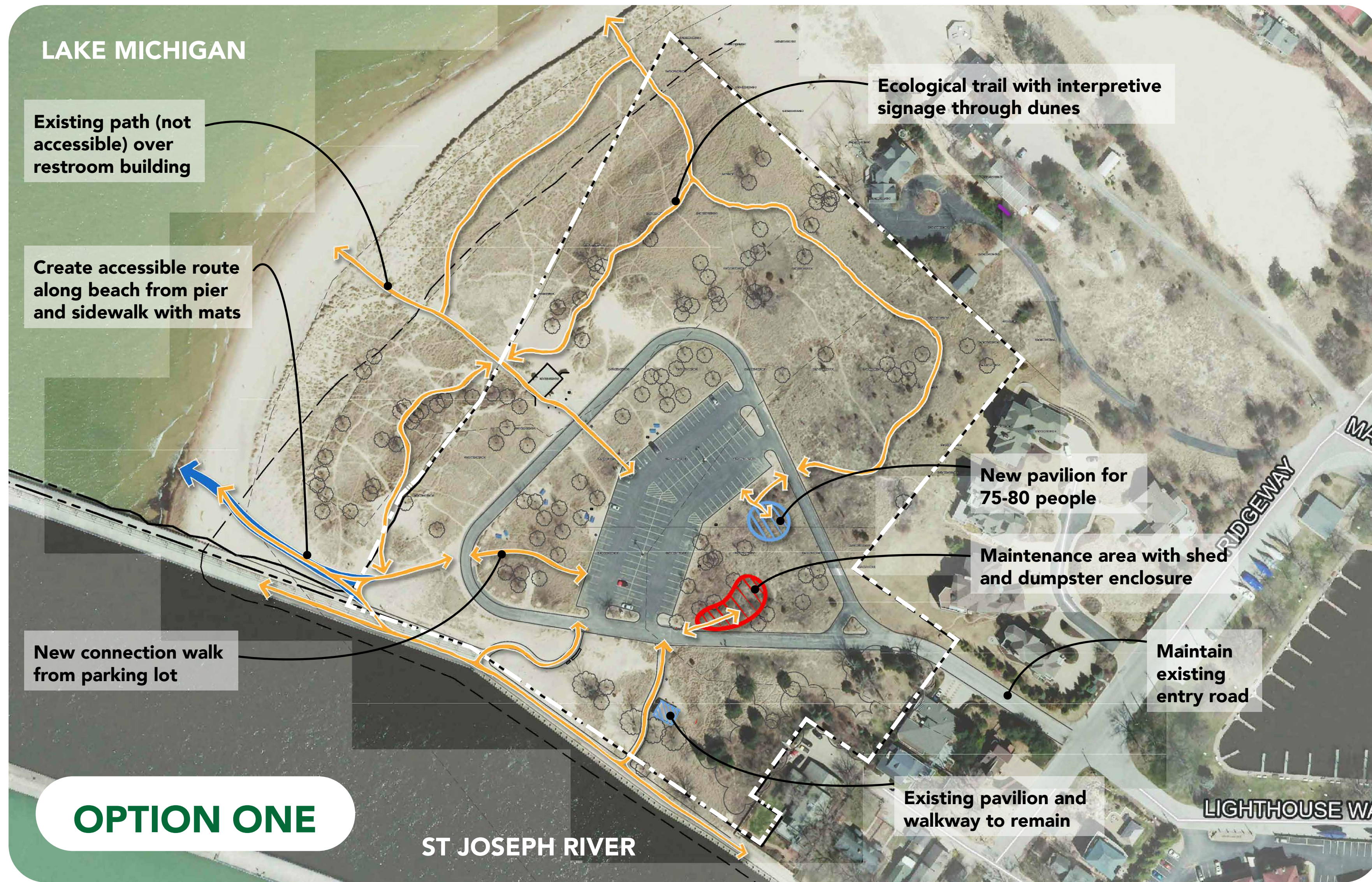


Looking northeast from parking lot to potential play loop or ecological trail

Tiscornia Park's 16 acres include a 130-space asphalt parking lot, restroom building, picnic and grill areas, a small shelter, access to the pier, and a wide beach area with swimming access.

CONCEPTUAL DIAGRAMS

TISCORNIA PARK



- Areas of improvements identified in the Parks Master Plan:
- Remove all unnecessary signage.
 - Change lighting to match City standard.
 - Renovate and expand the existing picnic pavilion and possibly add new pavilion.
 - More ADA parking recommended with route to pier.
 - Security camera on pier and lighthouse.
 - Plant native trees to replace those that are removed.
 - Bathroom updates needed.
 - Lifesaving station recommended.
 - Regular beach cleaning needed.

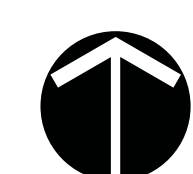
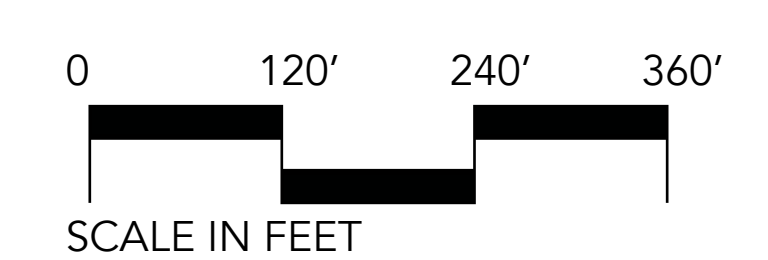
- Additional areas of improvement identified:
- Accessible route to the beach
 - New pavilion with small enclosed room for rentals.
 - Expanded parking to southeast.
 - Play area east of parking lot.
 - Identify new dumpster location with screening.
 - New maintenance shed for Gator and equipment.

DOT ON YOUR PREFERRED OPTION:

OPTION ONE

OPTION TWO

OPTION THREE



*Note: Facilities should be located to minimize impact to existing trees and ecological features. All removed trees should be replaced elsewhere on site with native species.



SHARE YOUR IDEAS

TISCORNIA PARK

PLACE A DOT ON YOUR PREFERRED OPTION FOR PAVILION TYPE AND PLAY AREA TYPE

PAVILION TYPE (STYLE TO MATCH OTHER ST. JOSEPH PARKS)



PAVILION OPTION A: OPEN SHELTER



PAVILION OPTION B: OPEN SHELTER WITH ENCLOSED ROOM



Boundary posts along east and south boundaries



Temporary accessible beach mat



Dumpster enclosure

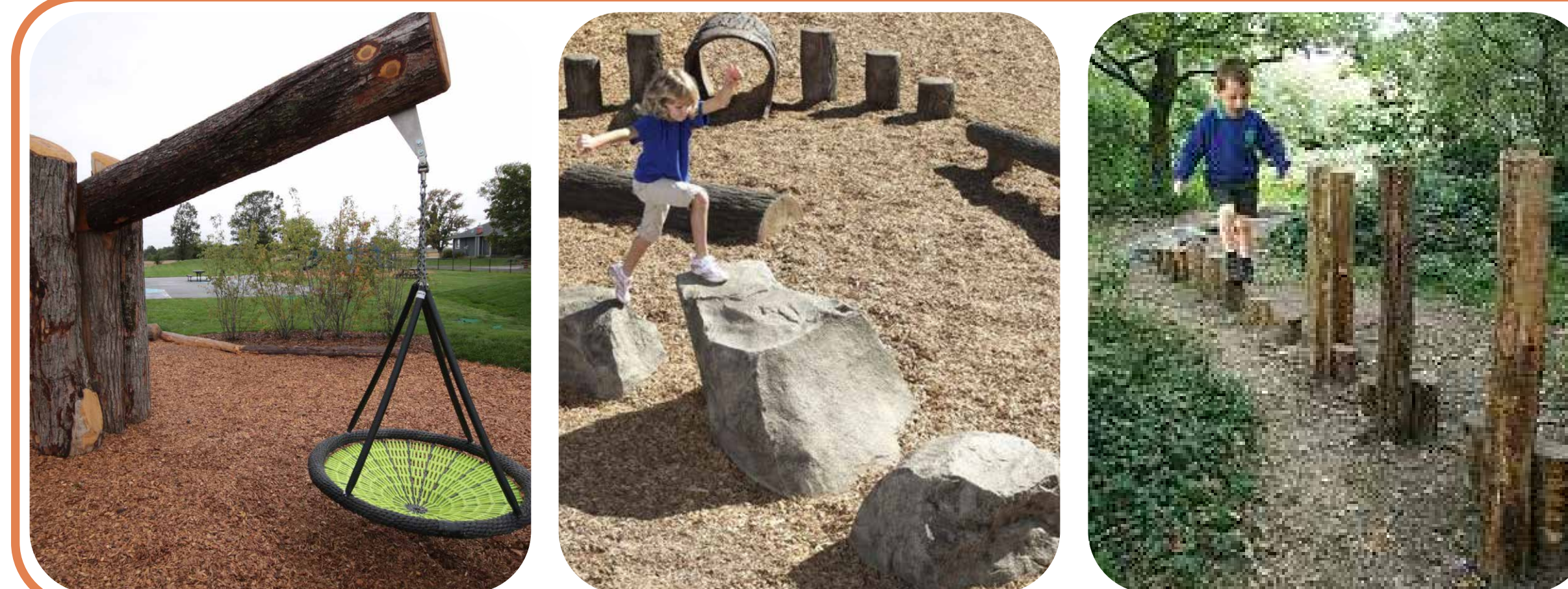


Maintenance garage

PLAY AREA



OPTION A: PLAYGROUND NEAR THE PAVILION



OPTION B: NATURE PLAY STATIONS ALONG THE ECOLOGICAL TRAIL

NOTE: Images shown are examples and are not always the configuration and/or model that will be proposed in the master plan. Images are shown to illustrate the variety of ideas.

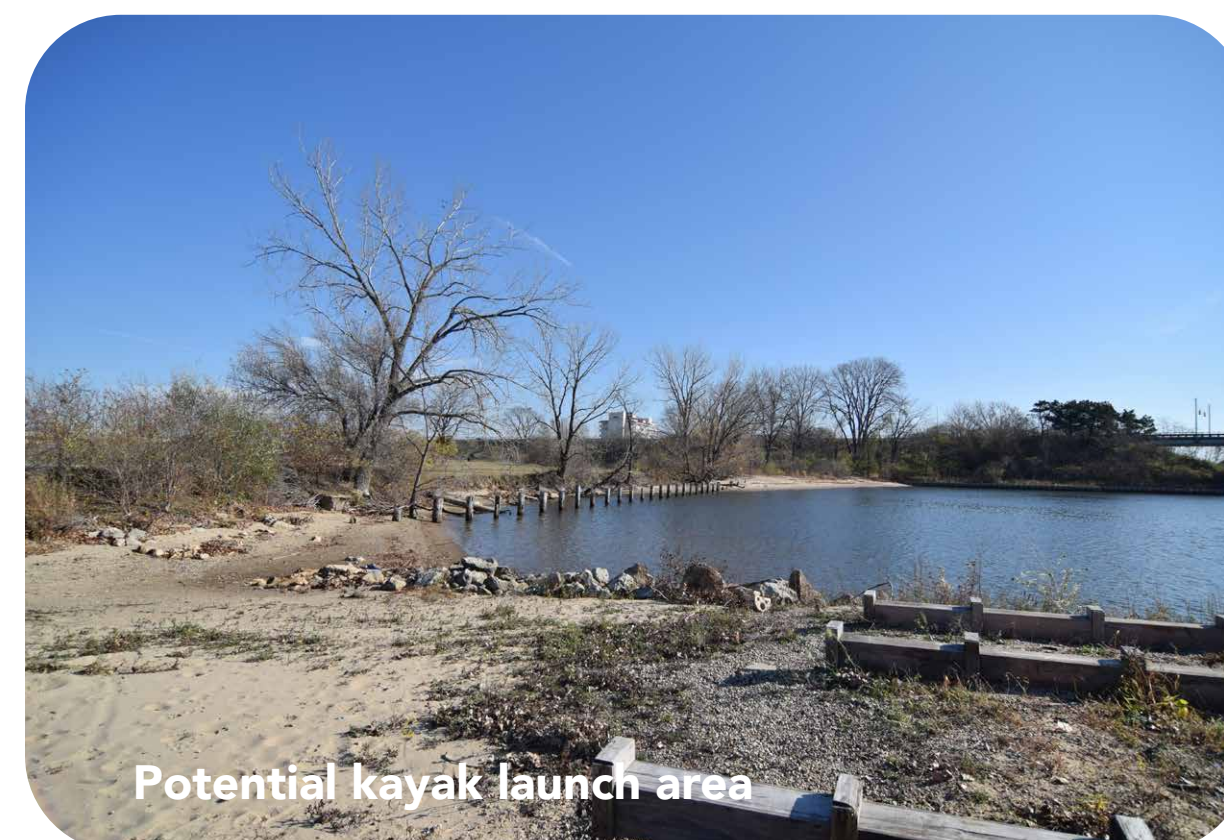
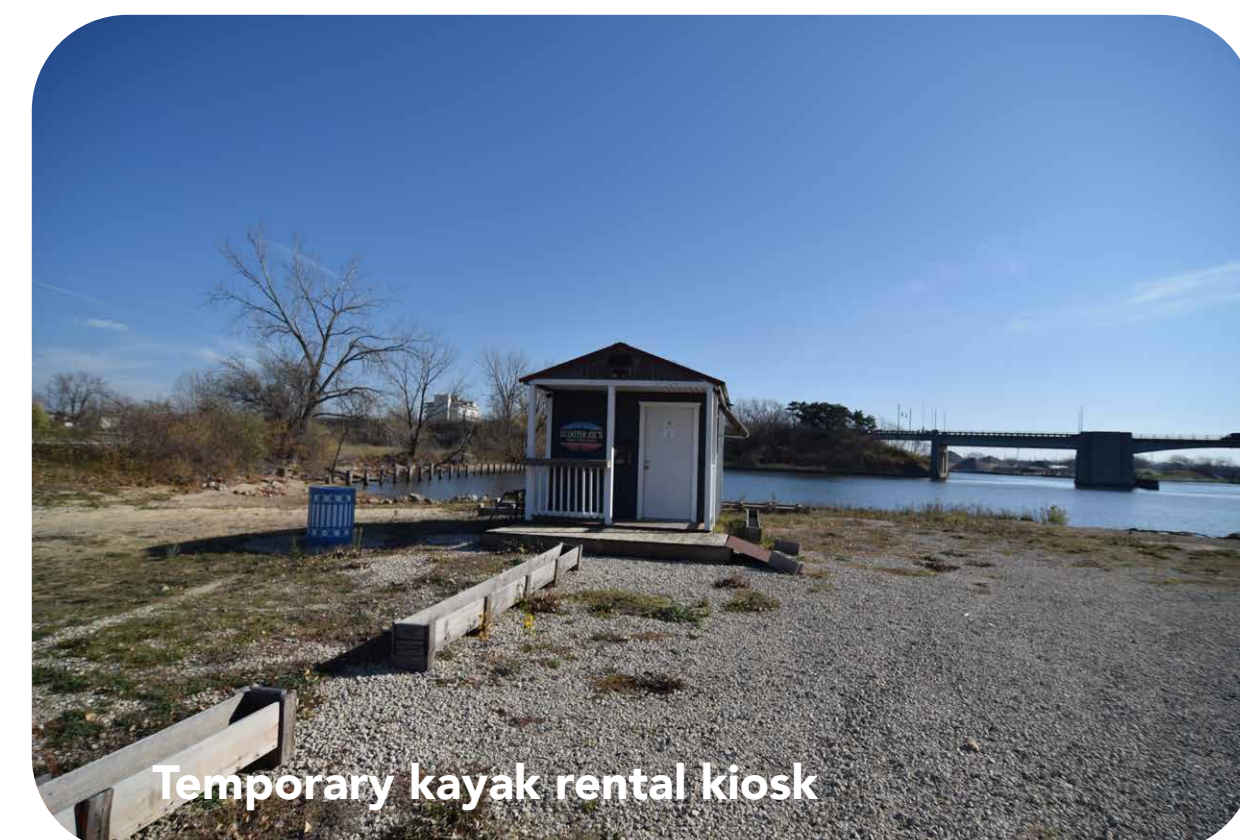
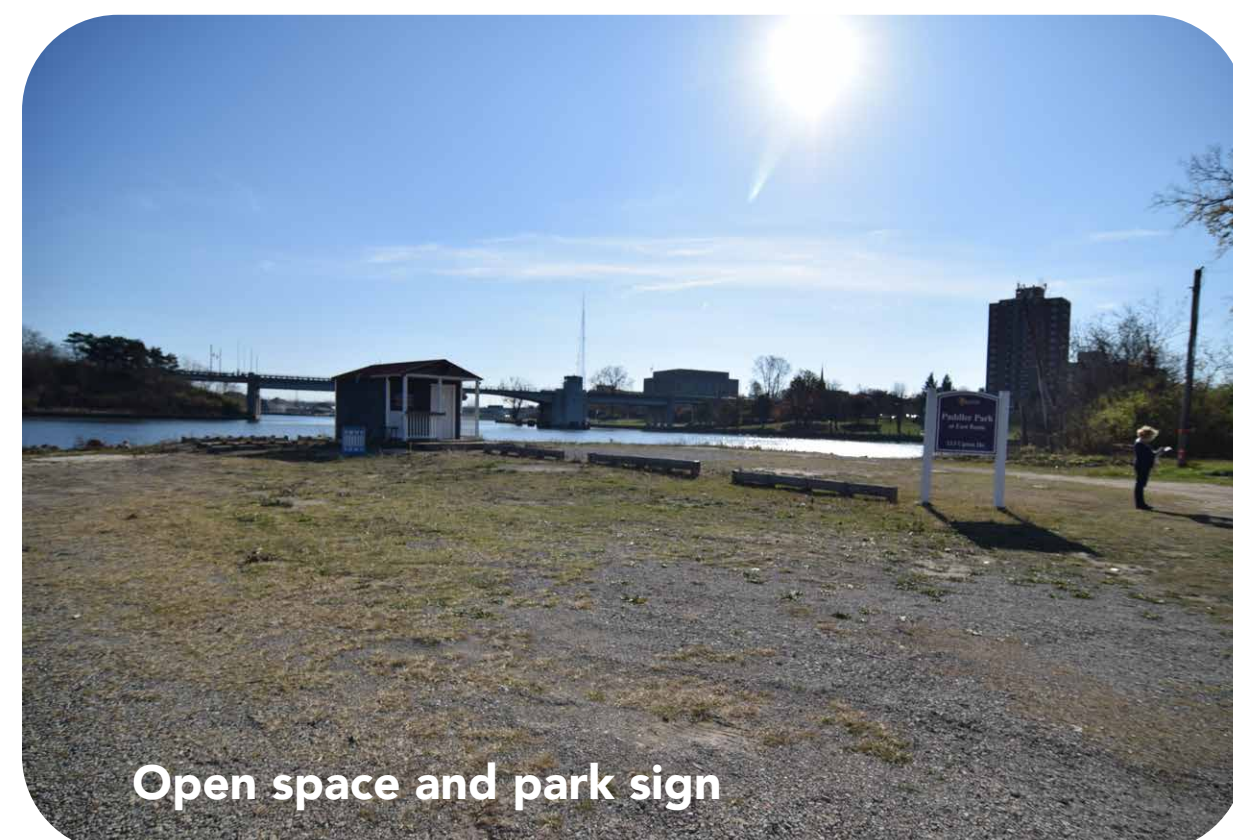
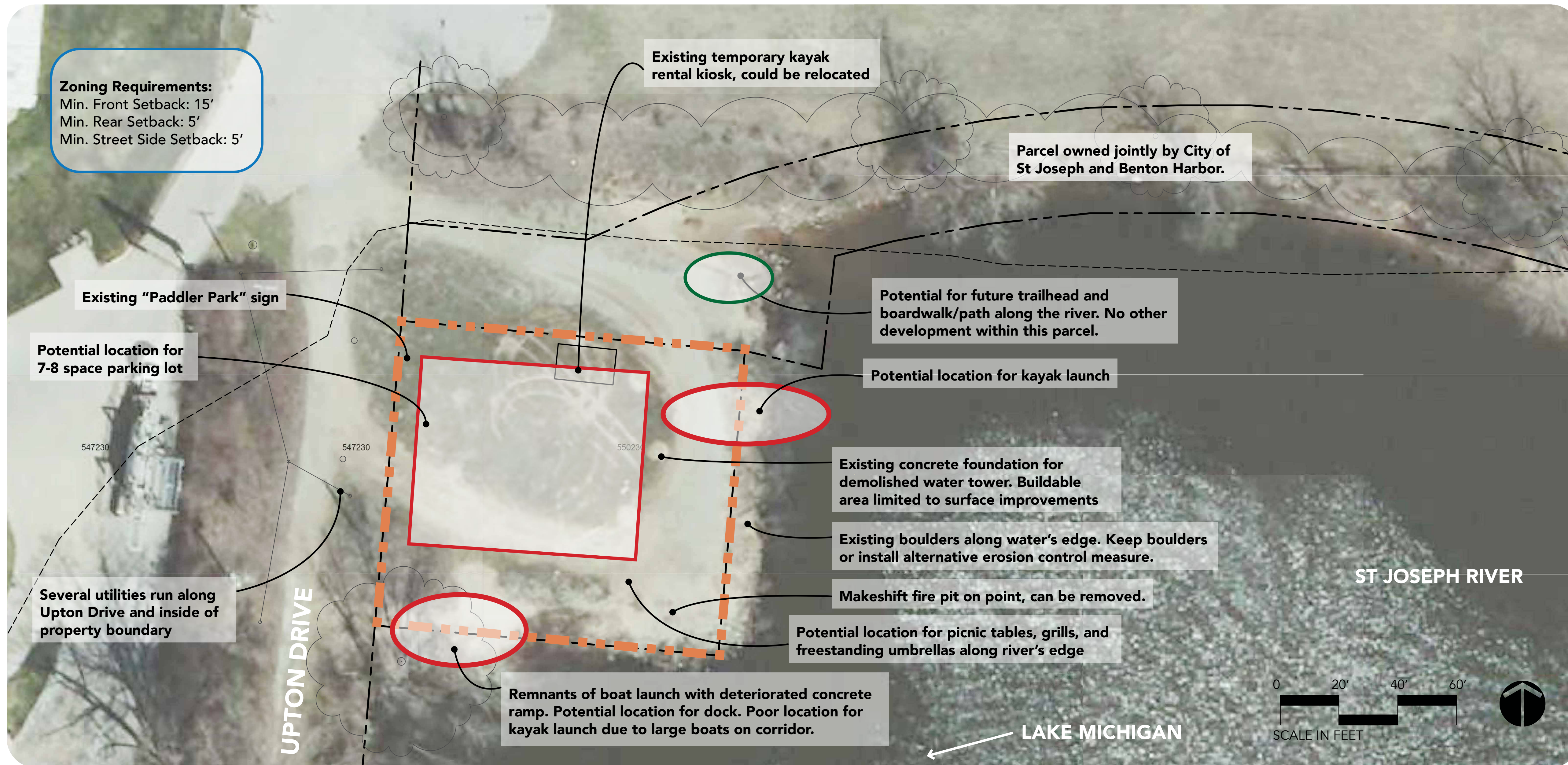
SHARE YOUR IDEAS

TISCORNIA PARK

JOT YOUR IDEAS ON A STICKY NOTE AND SHARE HERE

WHAT IS HERE NOW...

PADDLER PARK



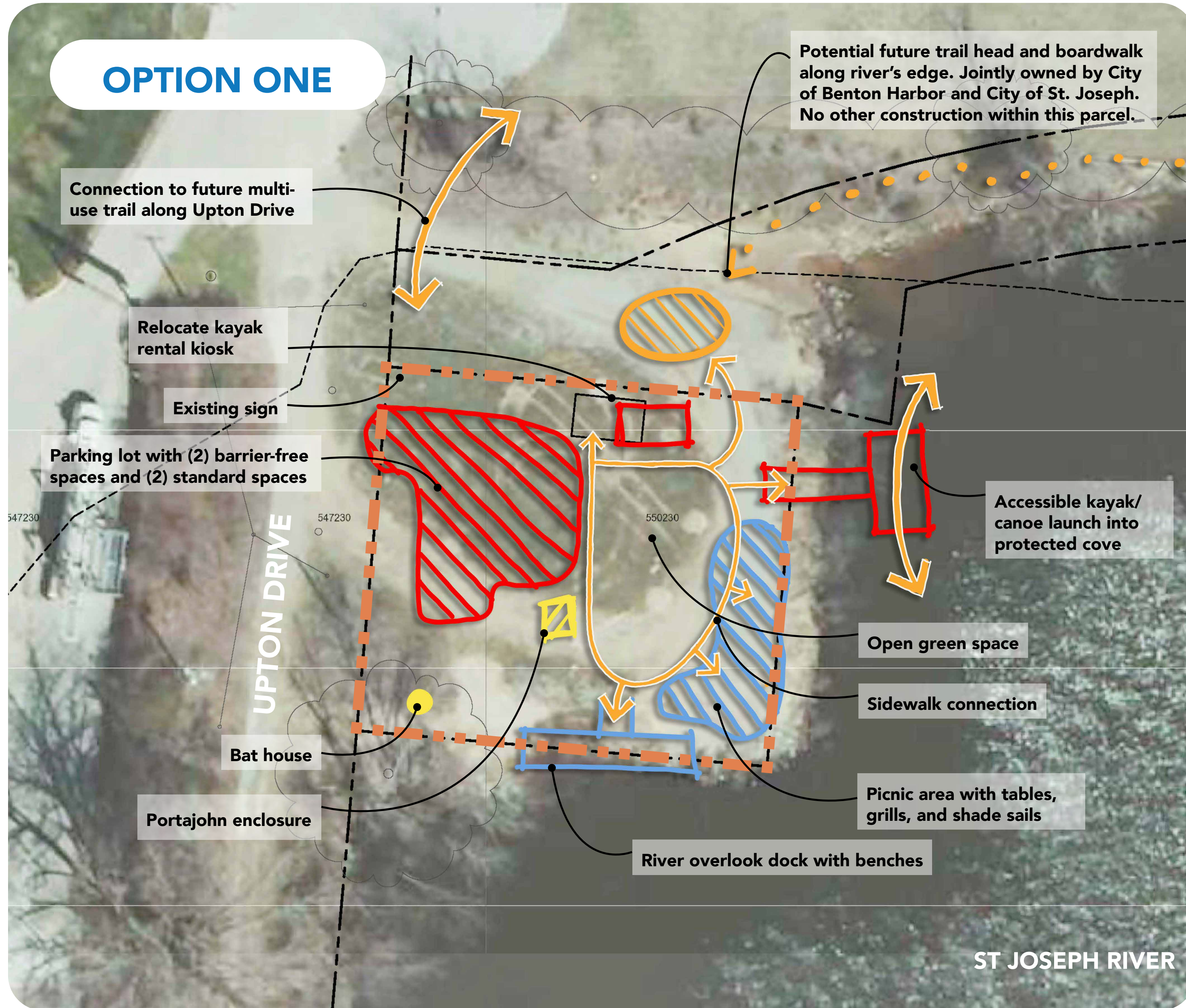
Paddler Park's 0.28 acres are on a low area of land on the former site of the water tower. A temporary kayak rental building, movable curb stops, a new park sign, and a makeshift fire pit are currently on the site. The soil is sandy with limited vegetation and aggregate for parking. The concrete water tower foundation covers approximately 2/3 of the site with hexagonal footings and a concrete curb. Below-ground foundation area is unknown.



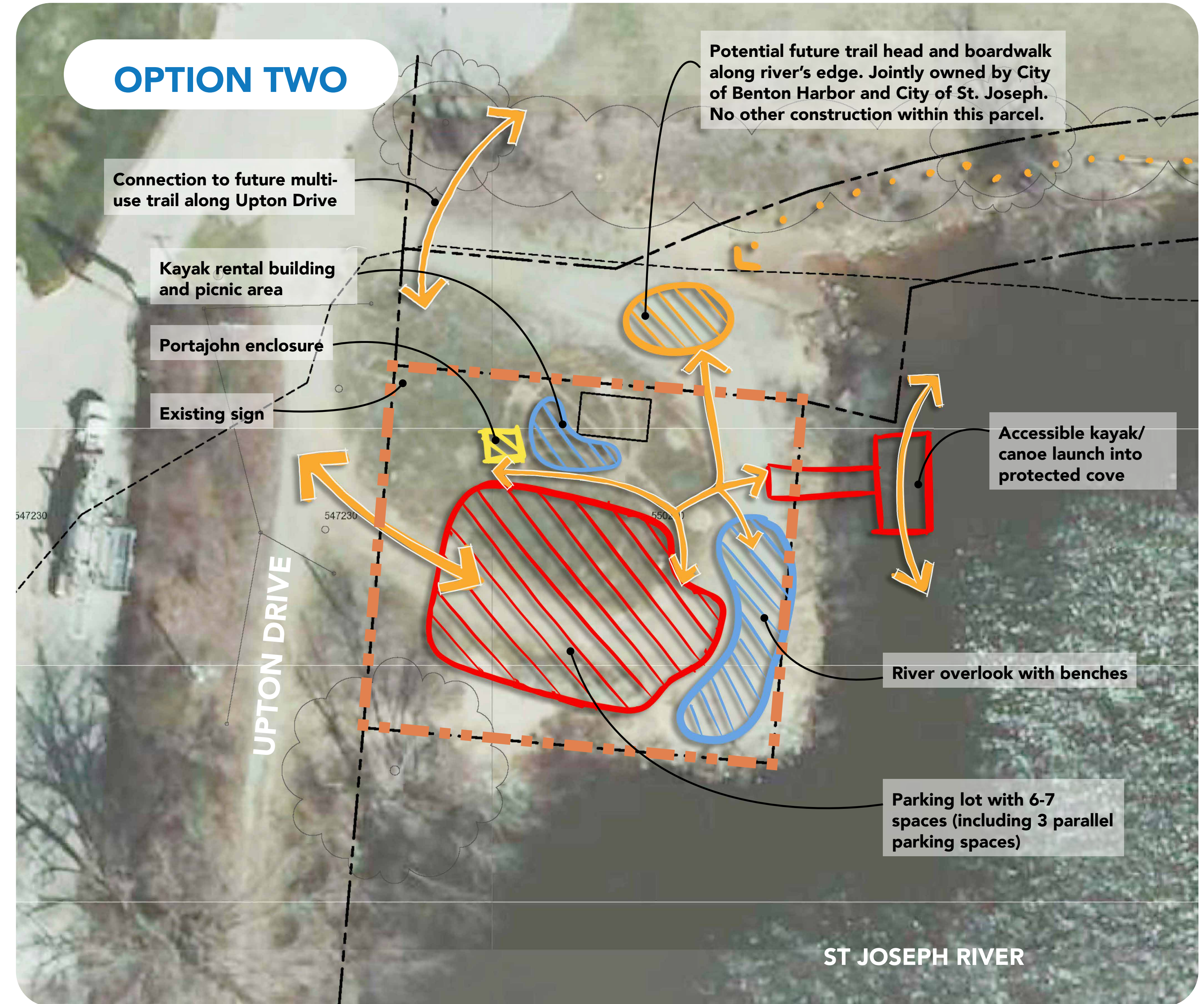
CONCEPTUAL DIAGRAMS

PADDLER PARK

OPTION ONE



OPTION TWO



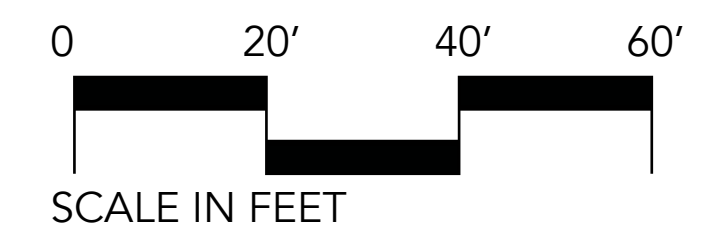
Potential Areas of improvement identified:

- . Accessible kayak/canoe launch
- . Future connection to trail
- . Establish parking
- . Picnic and river overlook
- . Security lighting
- . Bat House

DOT ON YOUR PREFERRED OPTION:

OPTION ONE

OPTION TWO



POTENTIAL FEATURES

PADDLER PARK

NOTE: Images shown are examples and are not always the configuration and/or model that will be proposed in the master plan. Images are shown to illustrate the variety of ideas.



Bat house



Surface-mounted shade sail



Information kiosk, security lighting, and bench at trail head and/or kayak launch



Picnic tables and grills



Portable restroom enclosure



Table with umbrella



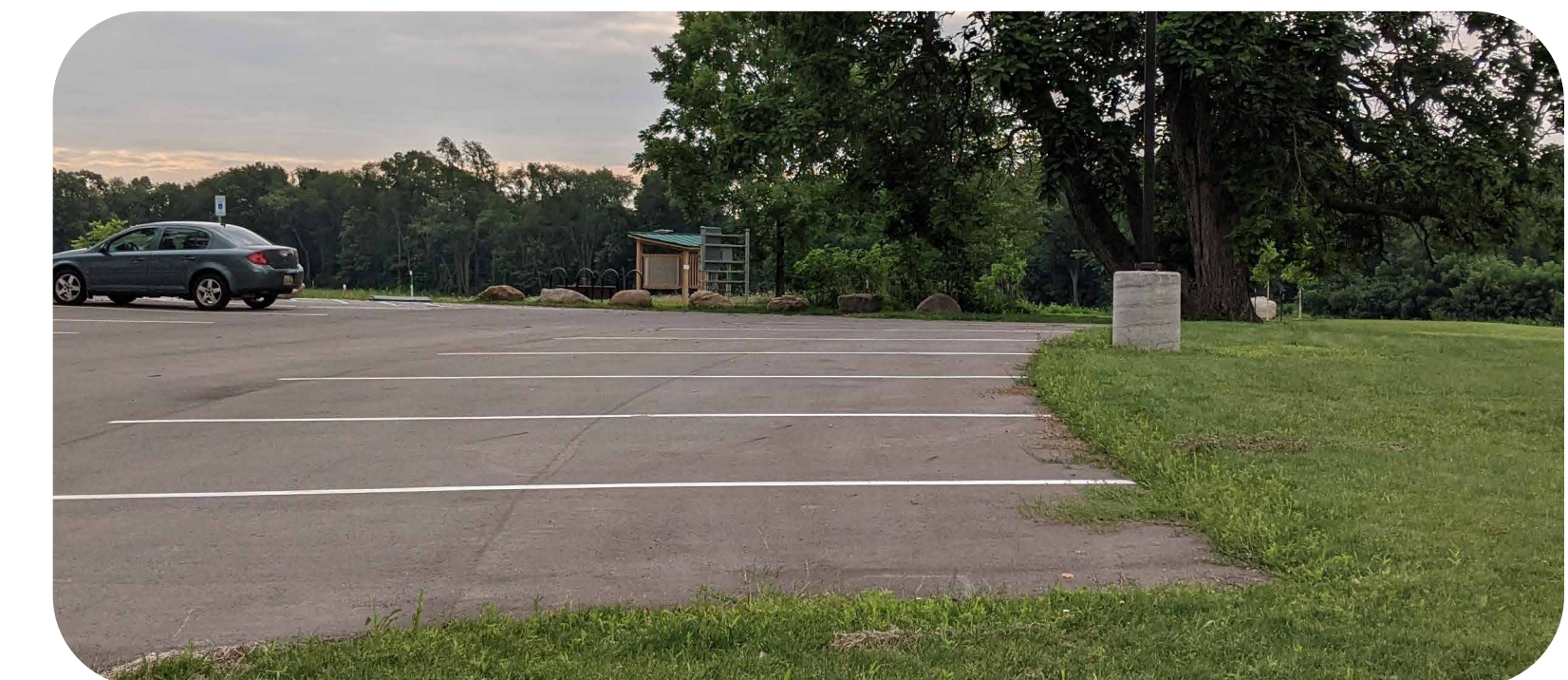
Overlook dock with viewing and fishing opportunity



EZ dock accessible canoe/kayak launch



Bench overlooking river



Small parking lot

SHARE YOUR IDEAS

PADDLER PARK

JOT YOUR IDEAS ON A STICKY NOTE AND SHARE HERE

