

# I-94BL Lead Service Line Replacement Project

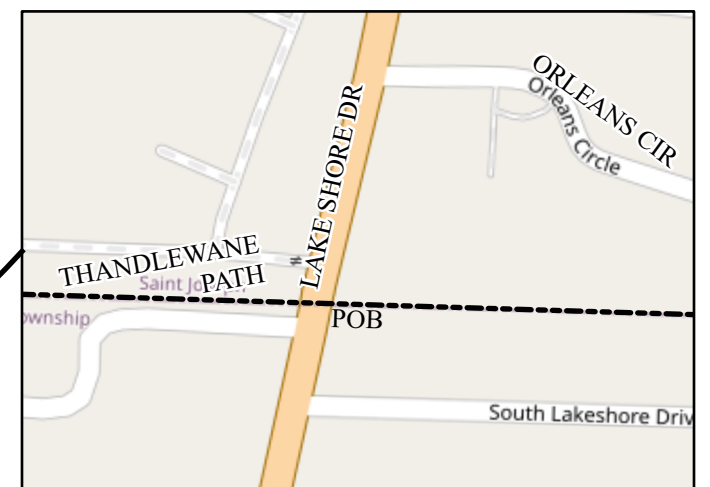
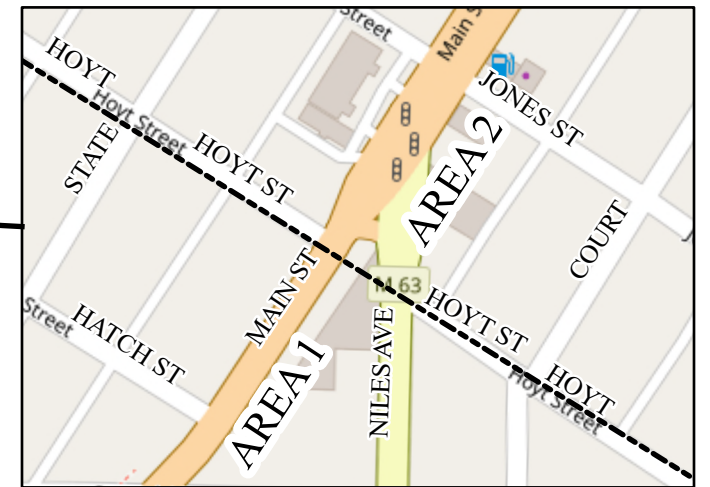
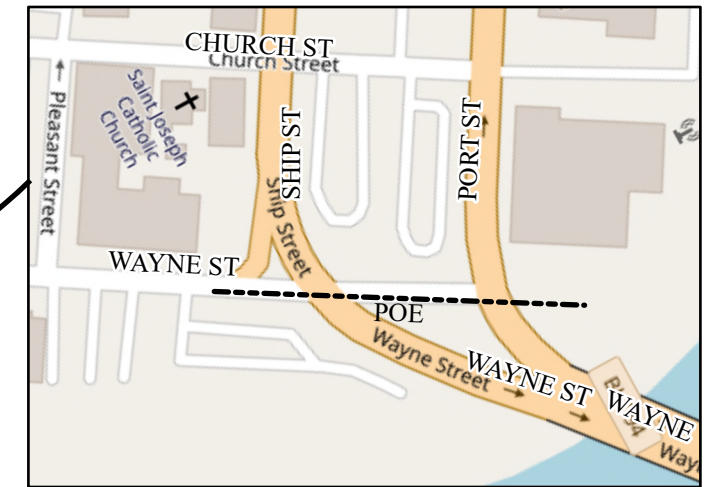
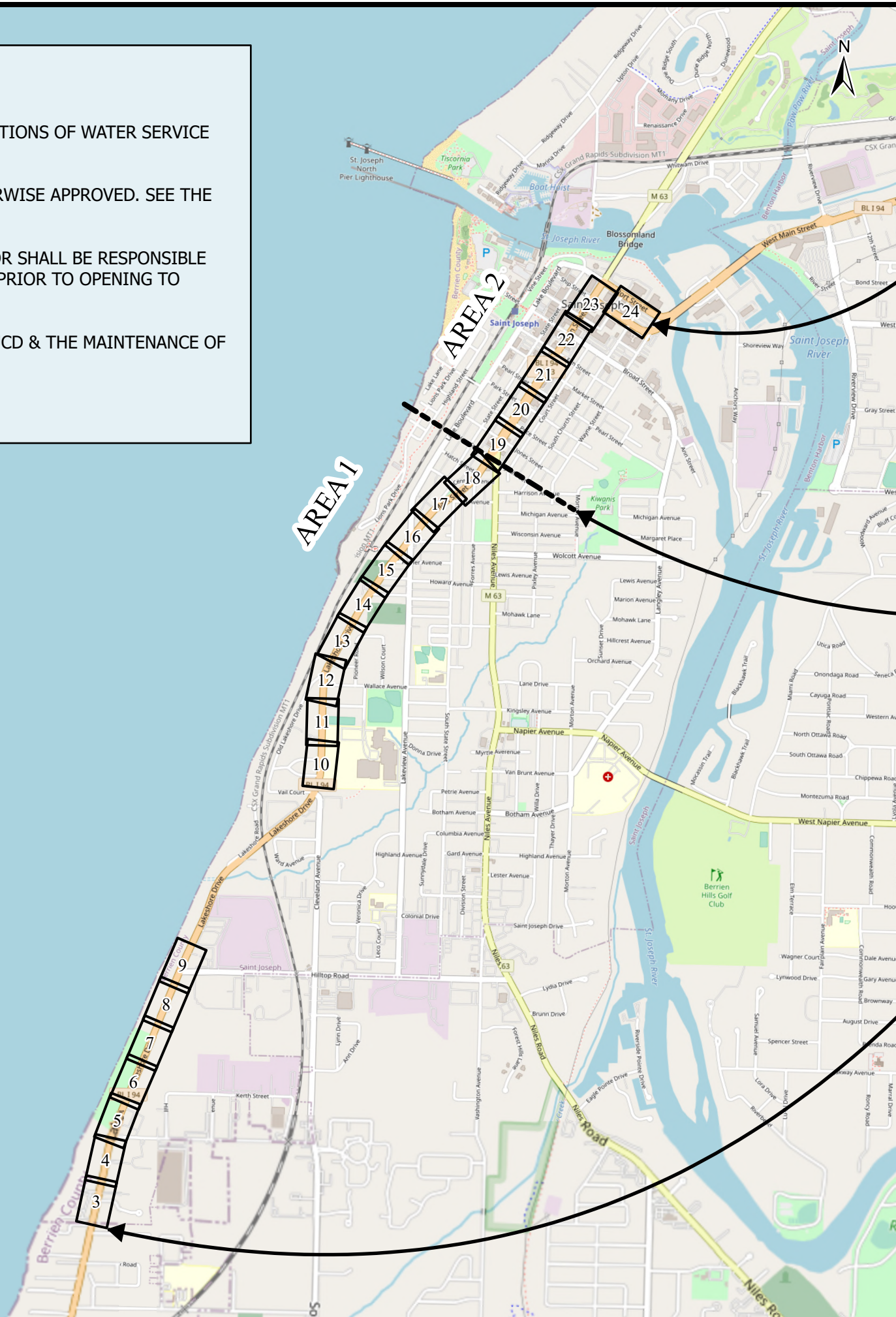
## NOTES:

WATER SERVICE LOCATIONS ARE ESTIMATED AND NOT EXACT. LOCATIONS OF WATER SERVICE WILL BE MARKED WHEN UTILITY LOCATES ARE CALLED IN.

PAVEMENT REPAIRS SHALL MATCH EXISTING SECTIONS UNLESS OTHERWISE APPROVED. SEE THE CROSS SECTION DETAIL FOR EXPECTED PAVEMENT REPAIR SECTION.

CONCRETE PAVEMENT SHALL BE MDOT GRADE P-NC. THE CONTRACTOR SHALL BE RESPONSIBLE FOR CONCRETE TESTING. RESULTS SHALL BE PROVIDED TO THE CITY PRIOR TO OPENING TO TRAFFIC.

TRAFFIC CONTROL SHALL BE SETUP IN ACCORDANCE WITH THE MMTUCD & THE MAINTENANCE OF TRAFFIC SPECIAL PROVISION.



## SHEET INDEX MAP



City of St. Joseph  
Engineering Department  
700 Broad Street  
St. Joseph, MI 49085

Telephone: 269-983-5541  
Email: tzebell@sjcity.com  
austin@sjcity.com

1" = 75'

DRAWN BY: AKA  
DATE: 1/6/2023